



# Education360

Education Management Suite

*The world's most complete education monitoring,  
management and analytics solution.*

# Contents

*“You can’t improve what you don’t measure.”*  
- Peter Drucker

4

## Introduction

- 4 Education360 Overview
- 6 Traction360 Methodology Pyramid
- 7 How Education360 Works
- 8 Education360 Capabilities
- 10 Education360 Case Study

14

## The Pillars Explained

- 14 Acquire360
- 16 Enrolment360
- 18 Student360
- 22 Recruitment360
- 24 Staff360
- 26 Planner360
- 28 ICT360
- 30 Ops360
- 32 Finance360
- 34 Benchmark360
- 36 Governance360
- 38 Board360

40

## Implementation

- 40 Education360 Features
- 42 Education360 Charts
- 44 Implementation
- 45 Platform + Device Agnostic
- 45 Data Source Agnostic
- 46 Data Dux Program



# Education360 Overview

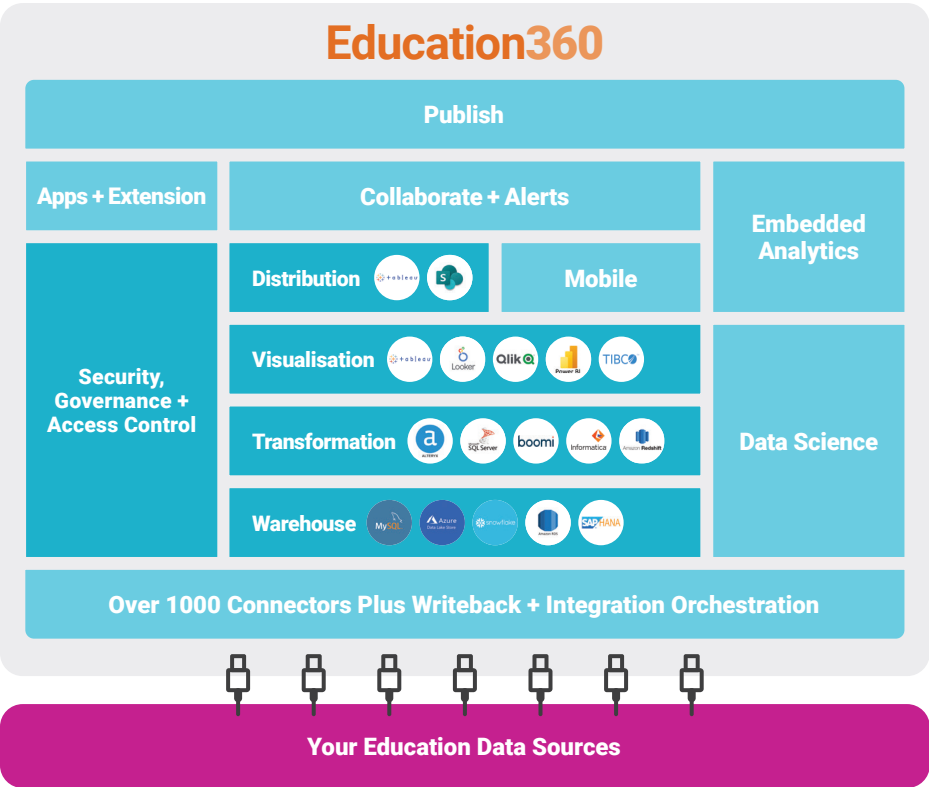
Education360 is designed to empower your school to progressively, yet rapidly establish a 360-degree view of each of your individual business units, ultimately rolling up to a centralised dashboard view of your entire school. Built on top of Domo, a market leading cloud-based platform designed to provide direct, simplified, near real-time access to business data for decision makers across your organisation with minimal IT involvement.

Besides your structured and unstructured data, dark data also lies with your organisation. Dark data is continuously being collected and stored, but is not organised via categorisation, labels, or any other effective organisation tool. It is currently in the “dark”. This treasure trove of data could hold valuable insights if it were to be organised and analysed. Potentially highly influential in the decision-making processes of a business, dark data is often waiting to be evaluated and analysed via data analytics.

We work with your school to understand your business needs and create a data strategy that allows you to explore, store and structure your data to help derive real business value. Once your data is structured, our consultants can help supply visualisations, dashboards and analytics that make big data easier to understand and manage and enable you to make decisions based on having access to the right data at the right time.

*Traditional business intelligence requires many components to be integrated and stitched together (as indicated by the logos within the four layers of a common BI solution).*

*Education360 is modern business intelligence in a complete, fully integrated cloud solution, providing all of the capability your education organisation needs to establish powerful and scalable analytics solutions while significantly reducing complexity and implementation times.*



## The 12 Pillars of Education360

### Acquire360

All your marketing metrics in one place, track campaigns across multiple platforms all at once.

### Enrolment360

From school capacity to feeder school insights, do it all inside Enrolment360.

### Student360

Unlock hidden insights into your cohort's performance with near real-time data and reporting.

### Recruitment360

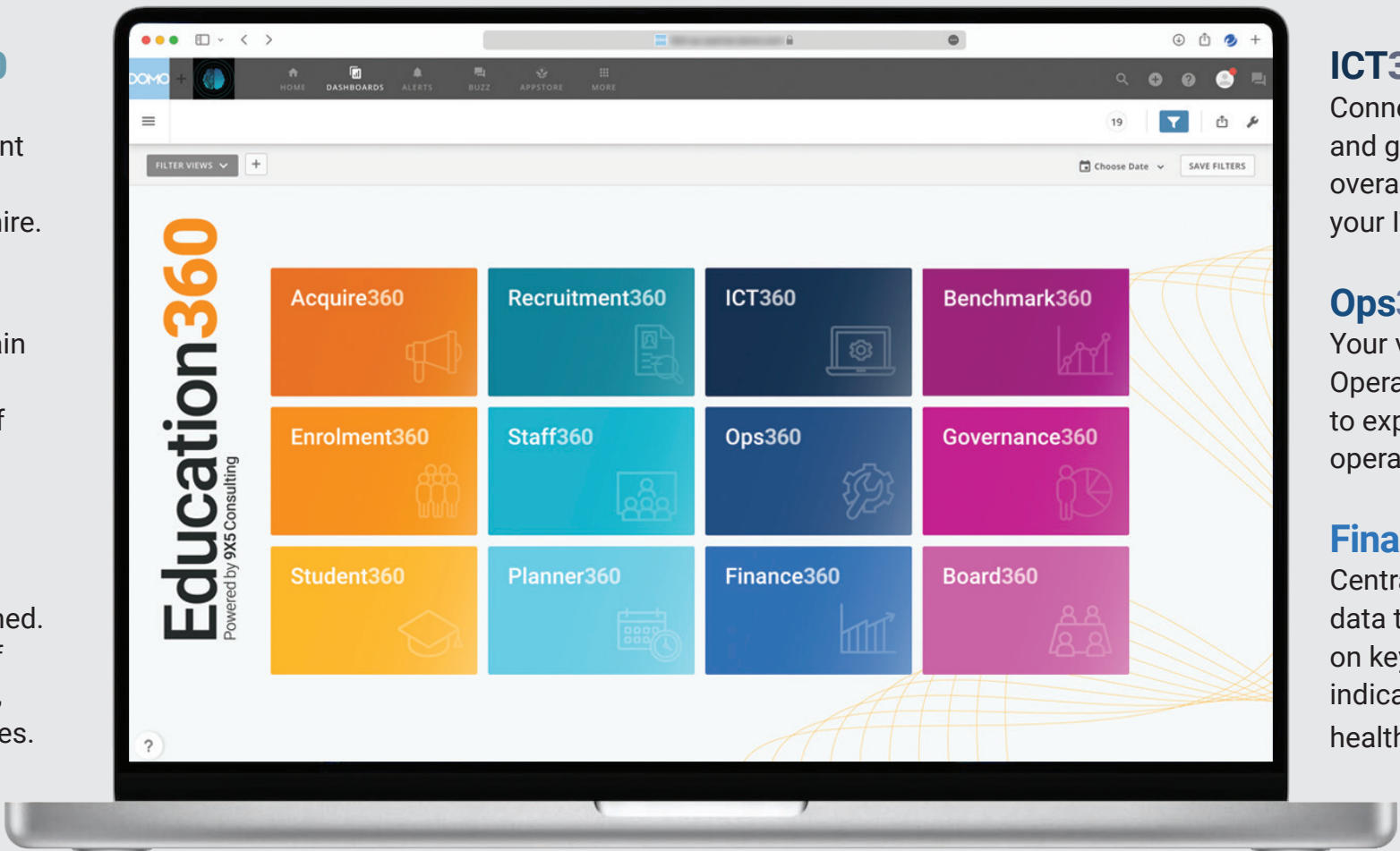
A birds-eye-view of your entire recruitment process. From open positions to time-to-hire.

### Staff360

Attract, train and retain through effective management of staff from recruitment to retirement.

### Planner360

Timetabling reimaged. A 360-degree view of all staff availabilities, duties, and capabilities.



### ICT360

Connect the digital dots, and get updates on the overall function of all your IT programs.

### Ops360

Your very own Chief Operations Officer, there to explore and develop operational efficiencies.

### Finance360

Centralised financial data to stay focused on key performance indicators and financial health of your school.

### Benchmark360

Maintain focus on how your school is performing to set standards, using third party datasets such as NAPLAN.

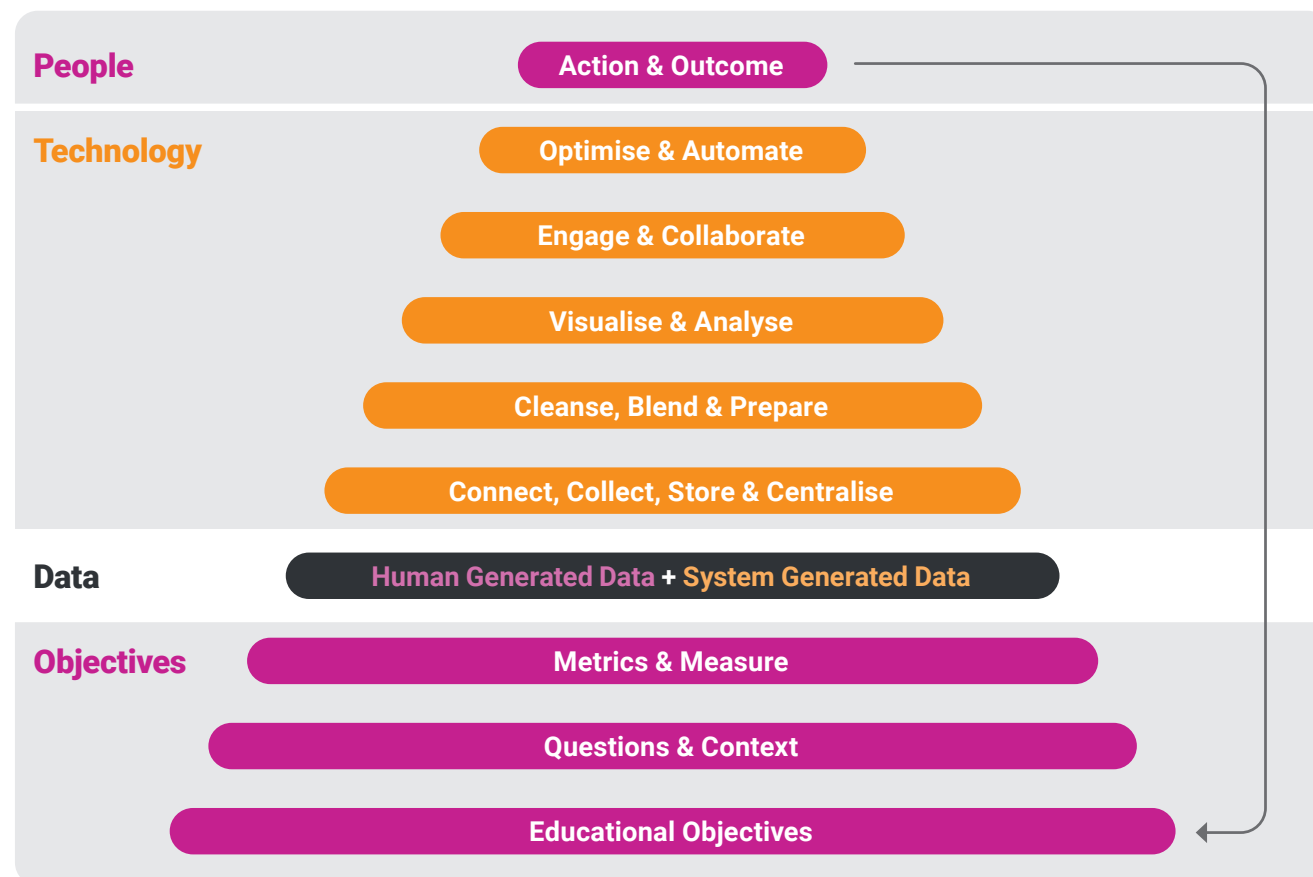
### Governance360

See who is using Education360 and how they are using it.

### Board360

Unify your school's key performance indicators by bringing all pillars together to drive effective oversight.

# Traction360 Methodology Pyramid



We have deep experience in delivering high quality, flexible and robust solutions to organisations across the globe with our Traction360 methodology.

The Traction360 methodology underpins everything we do in Education360 to help maximise the value of data, empower people with the right analytics at the right time, increase data literacy and improve the quality and efficiency of data flow through an organisation's entire operations.

While Traction360 is the foundation of everything we do, it is not exclusively reserved for us. Through our Coach pillar (pg.8), we teach our clients how to effectively utilise the Traction360 methodology to continue to evolve and grow the use of Education360 in their organisation.

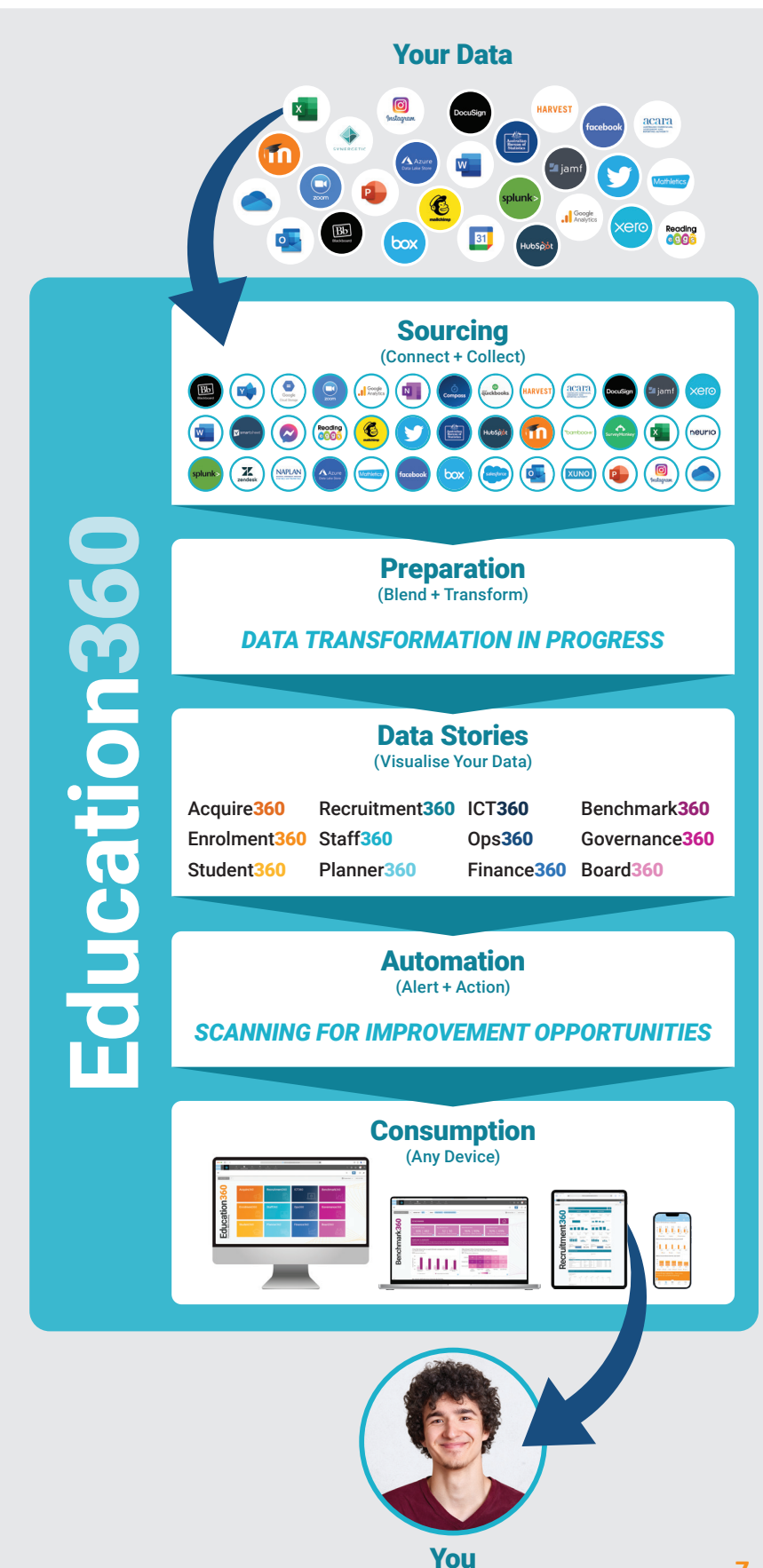
# How Education360 Works

Education360 is designed to empower your school to progressively, yet rapidly establish a 360-degree view of your individual business units, ultimately rolling up to a centralised dashboard view of your entire operations.

There are many data sources throughout the education system that teachers, principals and business administrators interact with on a daily, weekly and monthly basis. Education360 brings together these data sources across these business unit pillars, providing near real-time insights and reporting functions allowing you to adapt and target your decision making.

Elevating your school to the digital world should be one of your strategic objectives and we are here to not only show you how, but with you along the journey to success.

The engine room of Education360 consists of a proven data insights platform used by multi-million dollar businesses around the world. Education360 brings that very same enterprise level solution to schools around the world without the price tag.





# Education360 Capabilities

Maximise your organisation's Education360 investment with 9X5 Consulting's complete Education360-as-a-Service offering, ensuring all critical functions required for immediate success in your implementation and roll-out as well as the long-term health and effectiveness is fully realised.

9X5 Consulting's Education360-as-a-Service offering covers all the key functions you need from identifying your most important objectives to expert solution design, architecture, development and delivery, training and coaching, as well as security, governance and support.



## Strategy

Meet your organisation's goals

Comprehensive service in the discovery, engagement and delivery of your organisational strategy, covering a range of focus areas to identify opportunity and improvements - leveraging the full capability of Education360 within your organisation.

Our Edu360-as-a-Service Strategy pillar includes:

- Strategic Value Assessments (SVA)
- Roadmap Planning
- Strategic Solution Design
- Monetisation Opportunities
- Transformation With Data



## Coach

Preparing your organisation for success

Education360 is driven by a fundamental principle that your success is our success. Empowering your team with the key skills and knowledge to fully maximise the platform, evolve solutions and develop new use-cases will ensure your organisation can continue to maximise your investment long into the future.

Our Edu360-as-a-Service Coach pillar includes:

- 'Traction' Instructor Led Training
- One-to-one Coaching
- Custom Training Plans



## Adopt

Driving user engagement and adoption

All good projects must ensure adequate effort and focus is applied to the change management and adoption aspects of the project delivery. Failure to appropriately engage your user base can make or break your project success.

Our Adopt pillar follows our tried and tested change management, engagement, user onboarding and adoption models to ensure your user base takes full advantage of the data and analytics made available to them from the day Education360 is deployed.

Our Edu360-as-a-Service Adopt pillar includes:

- Change Management & Communications Coordination
- User Onboarding
- User & Usage Monitoring



## Support

Maintaining continuity of your solution

Have a small team stretched with their current workload? Don't have the appropriate skill-sets or resources to monitor or manage the ongoing support and health of your Education360 instance? 9X5 Consulting's support services will augment your team to provide front line support to your technical and business users, proactively monitor your environment and manage platform related support tickets with Domo on your behalf.

Our Edu360-as-a-Service Support pillar includes:

- Solution Support (Break-fix and Triage)
- Instance Monitoring
- Platform Triage Support
- Custom Solution Support



## Deliver

On time, on budget, to the highest quality

Education360 provides a comprehensive service in the discovery, engagement and delivery of your portfolio of Education360 use-cases across your business units.

From detailed use-case definition and planning to stakeholder management, daily stand-ups, quality assurance and solution deployment, we will ensure your Education360 projects are delivered following tried and tested best practices based on extensive real-world experience in delivering small, medium and large projects to organisations globally.

Our Edu360-as-a-Service Deliver pillar includes:

- Use-Case Solution Definition
- Use-Case Implementation Planning & Delivery
- Stakeholder Engagement & Management
- Quality Assurance & Testing Coordination
- Solution Deployment



## Govern

Governing to the highest standards

Good data governance does not start at your reporting tools. It begins back at the source, where clear business rules, ownership and stewardship all play an important role in ensuring quality, compliance and management of your organisation's data throughout its lifecycle and use.

Our Govern pillar brings together a range of data governance services targeted specifically at your Education360 instance, as well as more broadly to your governance council, ensuring your reporting and analytics remains to the standards required of the modern-day organisation.

Our Edu360-as-a-Service Govern pillar includes:

- Quarterly Instance Audit
- Quarterly Instance Clean-Up
- Quarterly Roadmap Review
- Data Governance Council Management



## Architect

Class leading Domo architecture and design

Education360 provides your organisation with access to specialist Domo solution architecture services used by organisations all over the world. From designing robust data sourcing and two-way integrations to scalable and flexible data pipelines, you can be sure that your dashboards are designed to the highest standards.

Our Edu360-as-a-Service Architect pillar includes:

- Data Sourcing & Connection Strategy Design
- Data Transformation & Pipeline Design
- Two-Way Data-Integration Design
- Public and Private Data Distribution
- Security Integration



## Develop

Building to best practise standards

Whether you need to fully outsource or augment your existing development team, our Develop pillar will cover your Education360 development needs. From implementation of the architected solutions to the development of custom connectors and apps. Our certified and skilled developers will ensure the highest quality implementation of your projects.

Our Edu360-as-a-Service Develop pillar includes:

- Data Sourcing Development
- Data Transformation Development
- Visualisation & Dashboard Development
- Custom Connector Development
- Custom Application Development



# Education360 Case Study

**Customer story:** Learn how Penola Catholic College uses Education360 to improve their insights into student performance.

## Challenge

Educators at Penola Catholic College struggled to access student data spread across ten different systems, forcing them to spend time wrangling data instead of teaching.

## Solution

Penola Catholic College implemented Education360, which is powered by Domo, to bring all its student data together in one dashboard.

## Impact

Educators can now analyse student performance at the cohort level or by individual students, allowing them to tailor their instruction.

Penola Catholic College is a co-educational secondary school that serves approximately 1,500 students in Years 7-12 across two campuses in the northern suburbs of Melbourne, Australia. The school attracts students from diverse socioeconomic and educational backgrounds throughout the city, while almost half come from families that speak another language than English.

With such a wide-ranging student population, the administrators and teachers at Penola Catholic College know that a one-size-fits-all approach to education would result in students falling through the gaps. Instead, they rely on data powered by Education360 to deliver a customised educational approach for each student so every learner can reach their full potential.

*"The biggest benefit of Education360 is that it reduces the time that staff must spend collecting data. We are giving hours back to the teachers."*

*- Matthew Willie, CEO, 9X5 Consulting*

*"Data is critical to the school in order to understand each student's individual learning journey," said Vera Treloar, Deputy Principal, Learning and Teaching at Penola Catholic College, "We use it to develop a learning profile that we can use to then drive improvement in growth for each student."*

## Holistic student understanding

Before Education360, educators at Penola Catholic College often struggled to leverage all the student data at their disposal. *"We had data in ten different places, forcing staff to go to ten different locations to find out everything they needed to know about their students. It was too much to expect,"* said Anthony Austin, IT Manager at Penola Catholic College.

Not only was data difficult and time-consuming for educators to collect, but they had no way to easily synthesise it in a way that could produce meaningful insights. Without the ability to visualise data and put it in context, educators couldn't quickly determine which step to take next, which meant at-risk students would fall further behind before they got the help they needed.

In order to leverage data to its full potential, Penola Catholic College worked with

*"The effective use of data allows us to make better-informed decisions that improve things for everyone."*

*- Chris Caldwell,  
Principal, Penola Catholic College*

Located in Melbourne, Australia, Penola Catholic College is a co-educational secondary school with a mission to cater for the spiritual, educational and formative needs of young men and women who seek the Catholic values of the College.

## Website:

<https://www.penola.vic.edu.au>

**Industry:** Education

**Number of Employees:** 250

**Number of Education360 Users:** 250

**Number of Students:** 1,500

## Products Featured:

- Education360
- BI & Analytics

## Primary Connectors:

- Workbench
- Excel
- Email connector / CSV-SFTP
- Webforms for capturing data



*Penola Catholic College uses Education360 to bring all its student data together in one dashboard.*





9X5 Consulting to incorporate their Education360 analytics platform, which is powered by Domo.

*"The reason why we built Education360 on Domo is that education institutions have some very specific challenges we wanted to address," said Matthew Willie, CEO at 9X5 Consulting. "We need to incorporate both on-premise and cloud-based data. We need to make it very, very easy for staff to utilise the data. We wanted the ability to annotate within the data itself. We wanted a project management tool to be incorporated so that staff members could hold themselves and students accountable."*

*"We chose Domo because it's the only platform in the world that can handle data from various data sources and do it in a way that makes it very easy and clean for staff members to utilise."*



### Empowering informed decisions

Thanks to the Education360 platform, Penola Catholic College is able to bring all of its student data together in one dashboard for instant, real-time access. "Their scores, assessments, attendance data, pastoral care data and more, are all there. A teacher can see it as a class summary, or drill down to one student at a time if they wish," Austin said.

The Education360 platform collects data from four internal data locations and six external data locations, with data coming everywhere from the school's student management system to spreadsheets capturing national testing data. It then visualises the data so instructors can see student progress at a glance and quickly identify areas for action.

*"The biggest benefit I get as a principal is that I now have the data I need to make better decisions about what's required for the school overall," said Chris Caldwell, Principal of Penola Catholic College. "From the teaching perspective, instructors now have a complete understanding about each student and at what level they're currently working at."*

***"Data is critical to the school in order to understand each student's individual learning journey. We use it to develop a learning profile that we can use to then drive improvement in growth for each student."***

***- Vera Treloar,  
Deputy Principal, Learning and Teaching,  
Penola Catholic College***

***"We had data in ten different places, forcing staff to go to ten different locations to find out everything they needed to know about their students. It was too much to expect."***

***- Anthony Austin,  
IT Manager, Penola Catholic College***

Teachers use the platform to differentiate the instruction they deliver on a student-by-student basis. For example, an instructor might look at recent scores on an algebra unit to see if there are specific elements that students are struggling with that they might need to review with the class as a whole, or with specific students who need more help. "The data helps us ensure there is not a gaping difference in student achievement in any specific area," Treloar said.

In addition to tracking academic achievement, Caldwell said that the Education360 platform has allowed the school to gain new insights



into their students so they can identify potential issues sooner. "If we see a student that has been performing really well but has a sudden drop off in grades or attendance, this indicates that there's something going on in their life that we may not necessarily be aware of, which allows us to investigate and work with the student and their family to get it resolved."

*"The effective use of data allows us to make better-informed decisions that improve things for everyone," Caldwell said.*

***Penola Catholic College improves it's student insight with Education360.***





# Acquire360

## Access data and statistics from all your marketing streams, all at once.

Acquire360 centralises and unifies data from across your marketing and admissions processes to form a 360-degree view of your marketing spend, reach, and the conversion of leads into enrolments. Get your leadership team or agency on the same page to gain deeper insights into which activities are resonating most with your target audience to drive greater return on your acquisition investment.

The marketing and sales landscape is forever growing. From a multitude of social media platforms to website assets, paid advertising, Customer relationship management, and everything in-between, leaders need to digest a lot of marketing and sales data across a multitude of different platforms.

With Acquire360, all these different data sources are available, up to date, and ready to go on a single page. No more logging in to ten different websites just to find statistics for a single campaign. Monitor your success across all platforms and channels from inside Acquire360 and determine the value of your marketing and sales team.

## Managing your marketing data is vital, here's why:

**80%**

of marketers say decisions are data driven

**73%**

of customers trust a school with good reviews

**92%**

of web traffic comes from Google search

**92%**

of users access the internet from a mobile

**170**

minutes spent online each day

Connect with thousands of data sources, including:

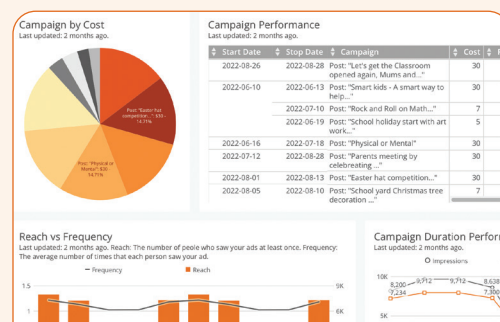


*Understanding whether your effort and expense are yielding positive benefits to your school's brand, reputation and enrolment numbers is hard. Coupled with disconnected admissions processes, it is almost impossible to know the true cost/benefit of your student acquisition activities without the centralisation of all your data.*

*Stay across your initiatives from the palm of your hand, giving you the option to increase the investment in successful campaigns with sound data supporting your decisions.*

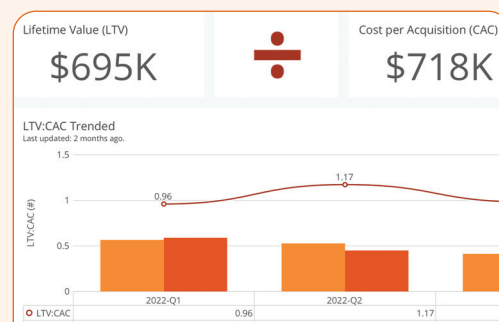


## Acquire360 Features



### Get campaign result insights

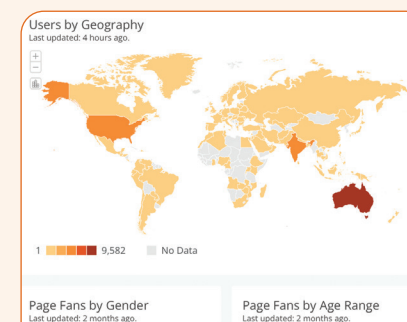
Gain near real-time insights into the performance of your marketing campaigns across all channels. Make campaign decisions quickly and timely by gaining the most up to date data whenever you need it.



### Lifetime value and ROI

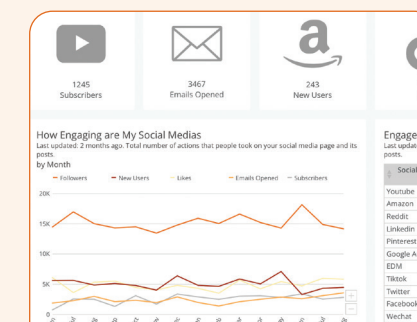
Is the cost of acquiring new customers higher than the value you get out of them? Easily see the value and ROI of marketing activities, as well as trends over time, to determine the value of your marketing activities.

All your marketing metrics in one place, track campaigns across multiple platforms all at once.



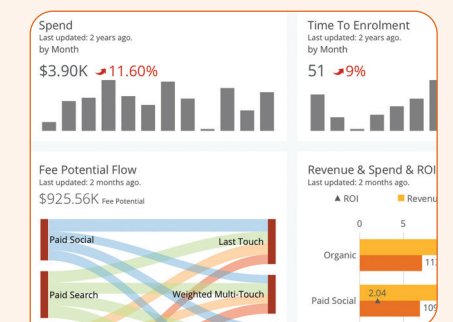
### Know your audience demographics

Gain deeper insights into where your audience comes from, how they interact with your content and who your audience is.



### Get social media insights

No more logging into various social media channels to gather insights. See all your followers, engagements, and impressions from all channels on a single page.



### Track campaign cost management

Track and optimise marketing campaigns to determine success. Gather insights on your cost versus conversion rate to change future campaigns for the better.



# Enrolment360

## Keep track of all your current and prospective students and enrolment rates with ease.

For schools across the world, the ability to enrol and retain students is critical to the financial success of your school.

The school budget, the programs offered and the teachers on staff all stem from the number of students that enrol at your school. It's your bottom line. Every school struggles to continue to increase student enrolment, simply due to the number of education choices available to students. Focusing on increasing enrolment requires a fully coordinated effort and often new approaches to programs offered at the school. Administrators and teachers need to work together on the best strategies for your school.

Fortunately, accurate student contact data can help schools with enrolment and retention of students.

Cut your costs of student recruitment and retention and improve on existing enrolment systems. Using enrolment data, determine which students would be the best fit for your school, track your social media updates, and get geocode location data on both current and prospective students.

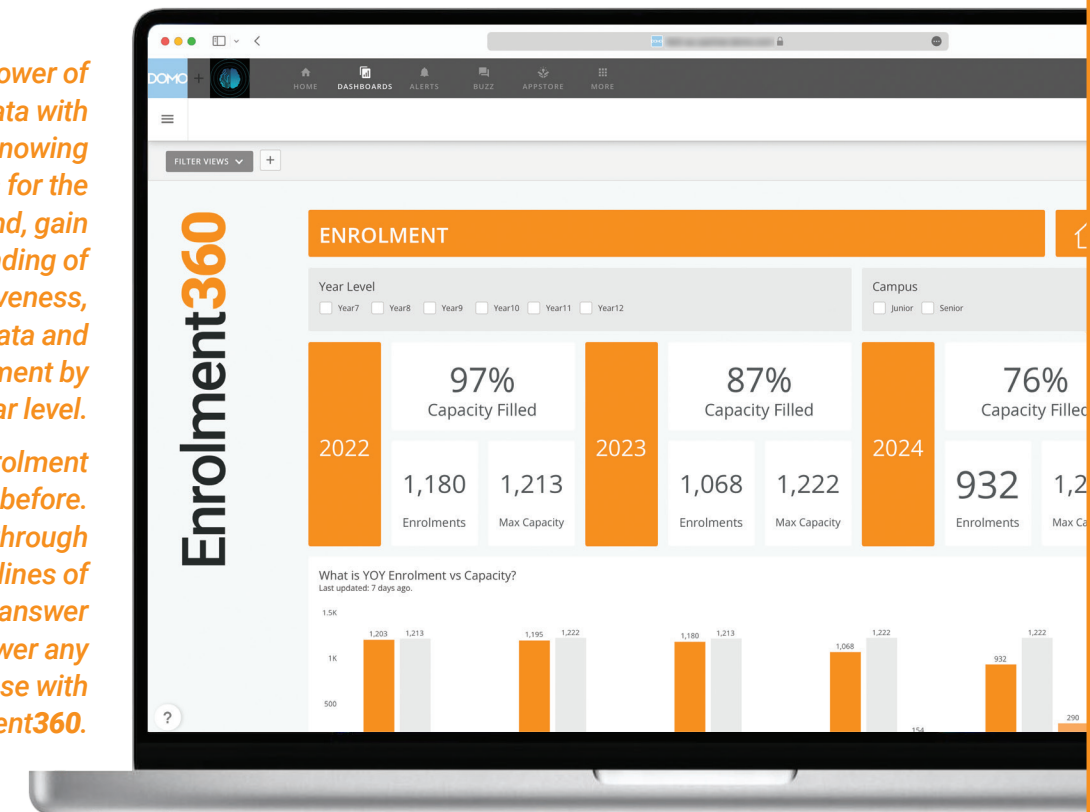
It's crucial for schools to start using student data to meet their enrolment and retention goals. Quality data helps you cut some of the cost of those processes, as well as focus your efforts on areas where they are most needed. It has never been easier to get a snapshot of your school's current and future enrolment rates, from year levels to the entire school, to ensure you're on top of enrolments with the power of Enrolment360.

Connect with thousands of data sources, including:

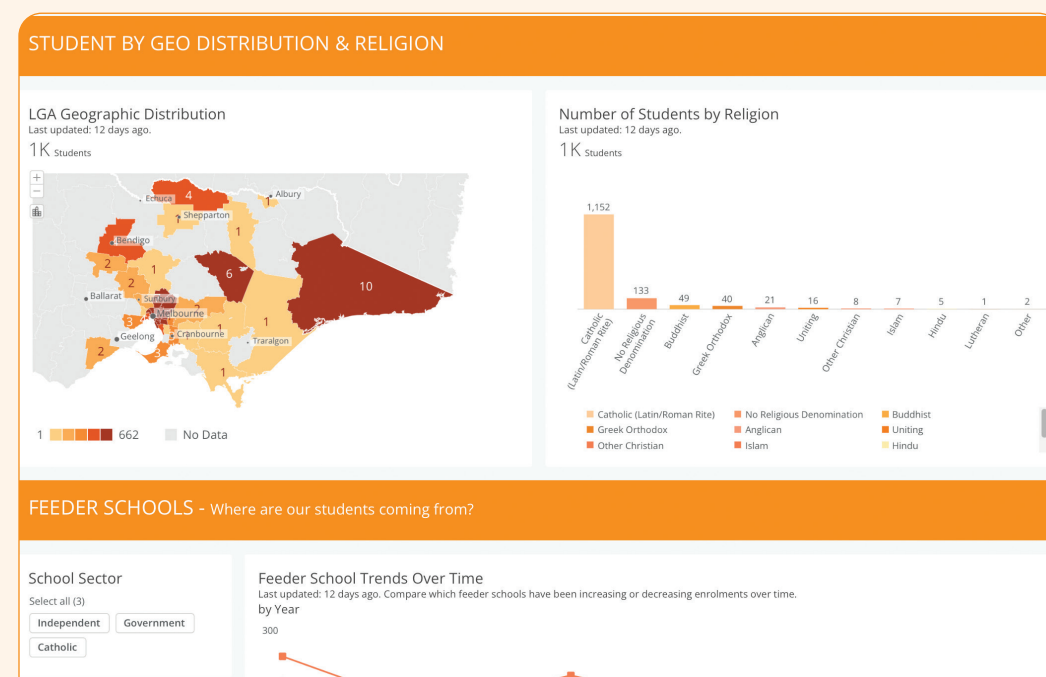


*Leverage the true power of your enrolment data with Enrolment360. Beyond knowing your capacity rates for the current year and beyond, gain a stronger understanding of your school's attractiveness, historical enrolment data and breakdowns of enrolment by year level.*

*Visualise your enrolment numbers like never before. No more scrolling through hundreds of lines of spreadsheets just to answer a single question. Answer any enrolment query with ease with the help of Enrolment360.*



## Enrolment360 Features



From school capacity to feeder school insights, do it all inside Enrolment360.

### Attraction - What makes your school unique?

What makes your school special? What programs are you offering that are unique? Why are your staff proud to work at your school?

Every school is unique. Every school has a character, a history, a culture. Defining what that looks like and expressing it to your community is important. Your school's unique factor could be the sports teams, special programs, faith-based instruction, or a unique approach to classroom learning. This is the "brand" of your school and the reason that parents may recognise it as a place to send their children.

The brand may not be what you automatically assume. Start by asking staff, students and parents what they like about the school. Asking parents will give you a good idea about why they sent their child to the school in the first place. Tip: You can use their quotes later in promotional messages.

Maybe you're thinking about standing out from the crowd a bit more and trying something new at your school. There are many programs and differentiation options to consider that will attract the eyes of prospective parents. Each requires adjusting the curriculum, training staff (or hiring new staff) and getting the necessary resources for your school.

# Student360

## Create new insights and make better data driven decisions for your students with Student360.

Today's educators have become data wrangler's tasked with the responsibility of fusing data to generate insights and inform their teaching. Your student's digital footprint within your school is growing by the day with the proliferation of personal devices, online learning tools, remote and digitised classrooms, collaboration tools and more. The volume and breadth of data your students are generating is growing exponentially.

*"[Education360 is] a 'Ferrari' standard data dashboard according to my contextualised needs... Data-informed differentiation made easy!"*

*- Maria Alberto, Research Lead,  
Penola Catholic College in Melbourne, Victoria*

Student360 is the workhorse bringing together historic and current academic performance, attendance, engagement and wellbeing data. External assessments such as PAT and Essential Assessments are easily managed through the dashboards giving teachers ability to assess, plan and inform practice in near real-time.

## Why should you be managing all your student data?

**41%**

growth in the use of AI in education sector

**91%**

of teachers report administration as a hindrance to their core job

**54hrs**

average teachers are working per week

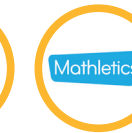
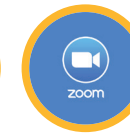
**86%**

teachers say data is important to their effectiveness

**17%**

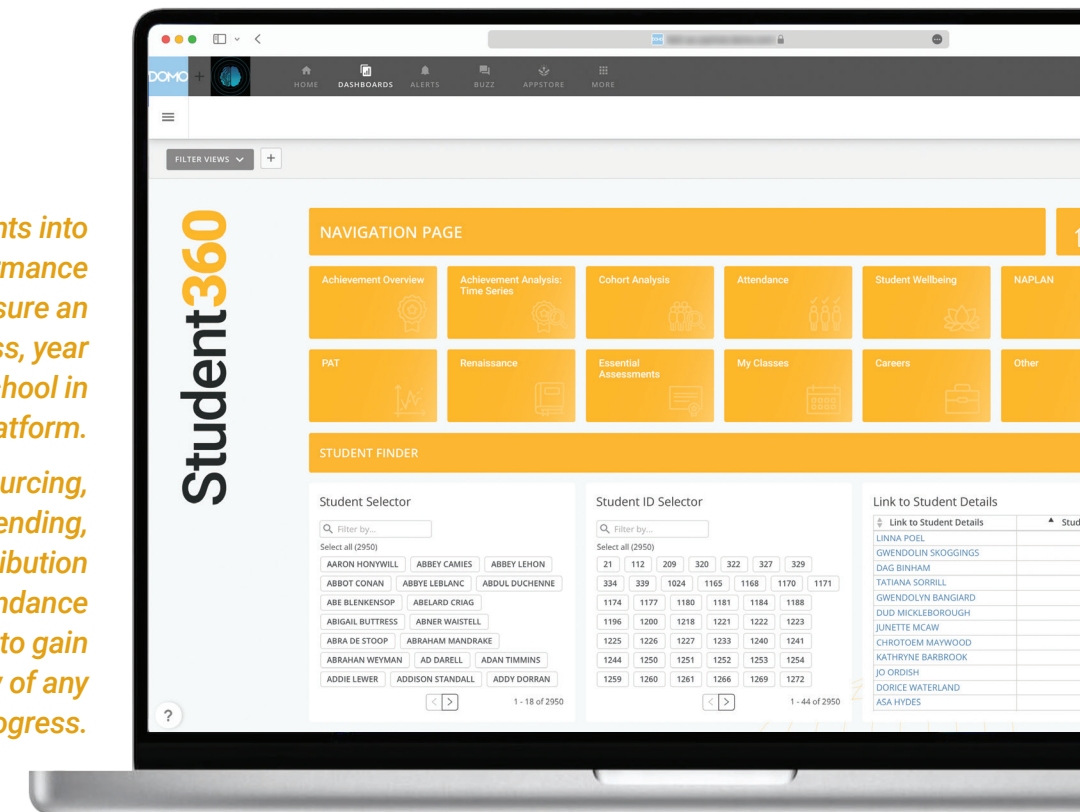
teachers learn about using data during training

Connect with thousands of data sources, including:

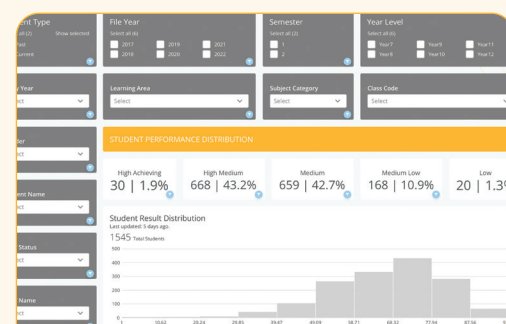


Unlock hidden insights into your student's performance with Student360. Measure an individual student, class, year level, or the entire school in one platform.

Manage the sourcing, collection, blending, visualising and distribution of academic, attendance and wellbeing data to gain a 360-degree view of any student's individual progress.



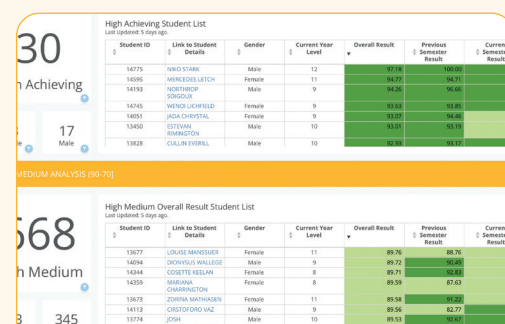
## Student360 Features



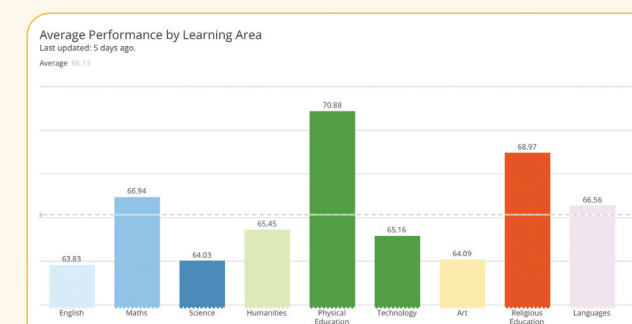
### Achievement Overview

A top view of student's performance distribution and ability group placement. From yearly results to results by teaching staff, see it all inside Student360.

Traffic light reporting allows you to pay attention to those metrics and indicates overall student progression.



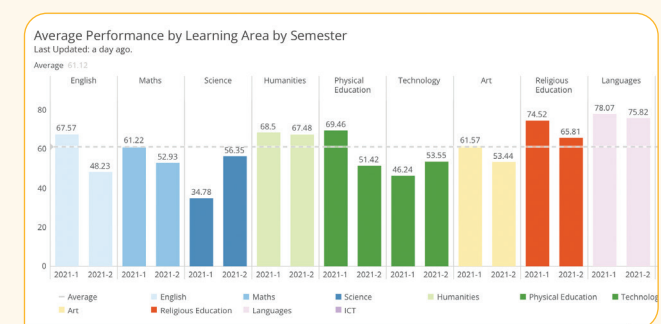
Unlock hidden insights into your cohort's performance with near real-time data and reporting.



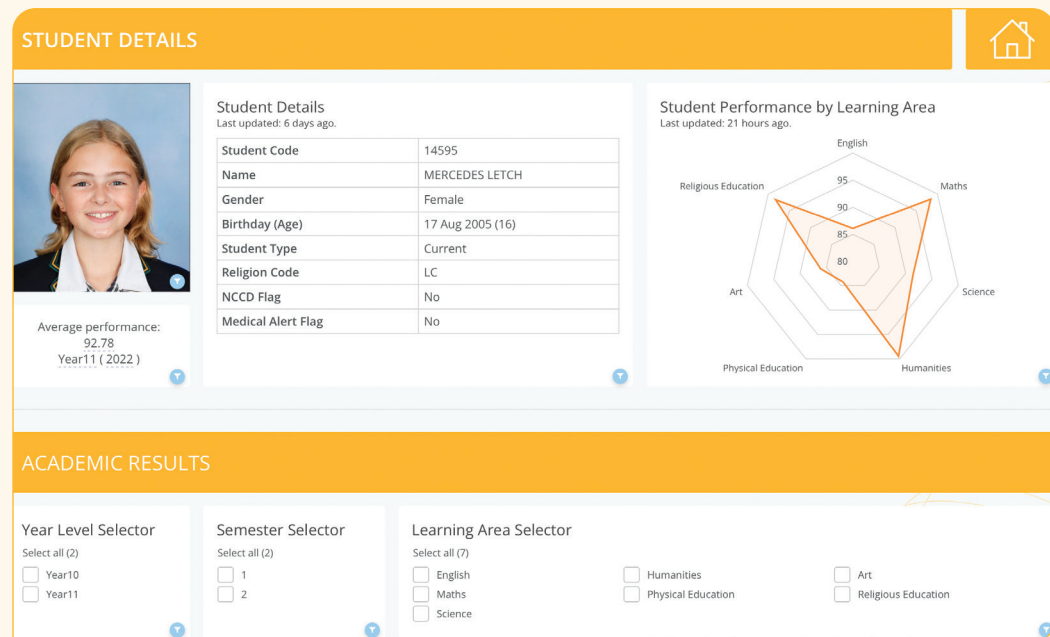
### Cohort Analysis

Make quick and efficient strategic decisions by comparing academic performance to variables such as attendance or class codes.

Take action across your entire school with continuous, current and relevant data. Compare growth between semester across all learning areas and specific subjects and classes.



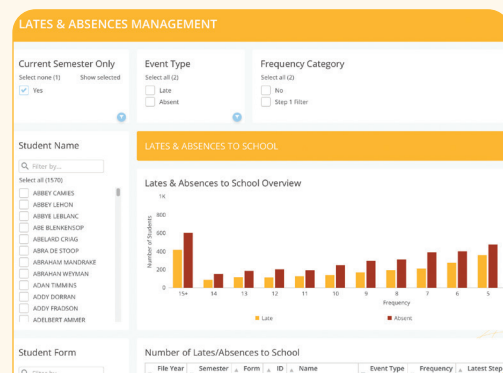




## Student on a Page

More than just a student profile. Plan and deliver content for student's individual needs by viewing student performance across all learning areas, for any year or semester.

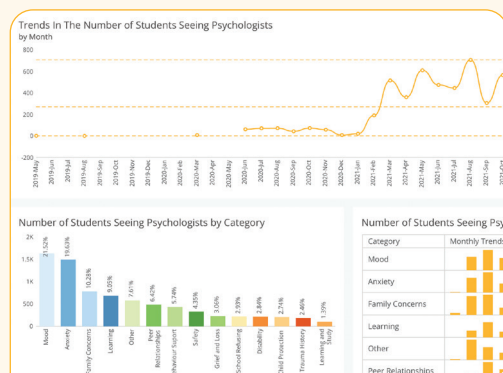
Monitor and discover individual student lates and attendances via Student on a Page, drill down to absent type, frequency, class codes and dates of student absences.



## Attendance

Attendance is an important contributor to student achievement. Monitor your school's attendance data through our visualisations to better understand factors related to student absences.

Identify at-risk students with 'Student Subject Fails Analysis', customise alerts when any data changes and make the right intervention decisions to support your students.



## Wellbeing

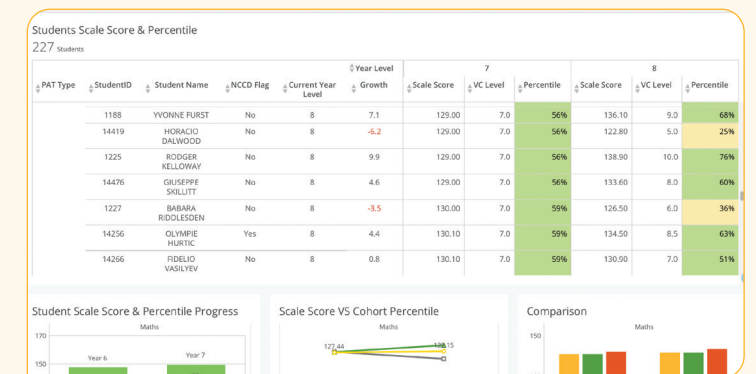
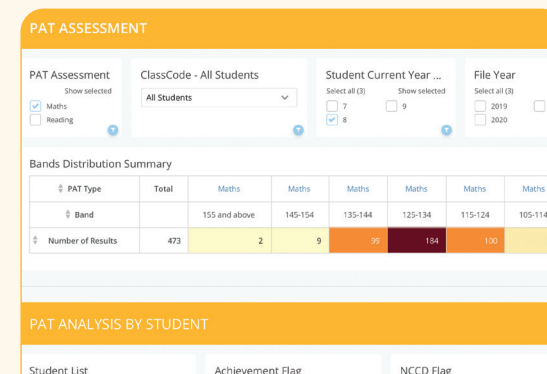
Educators and school communities play a significant role in supporting and developing learner wellbeing. Manage the wellbeing of your students through monitoring attendance and connect the dots between learning and student wellbeing.

Improve discipline by pinpointing concerns and identify root causes to create an action plan for your students and track progress.

## External Assessments

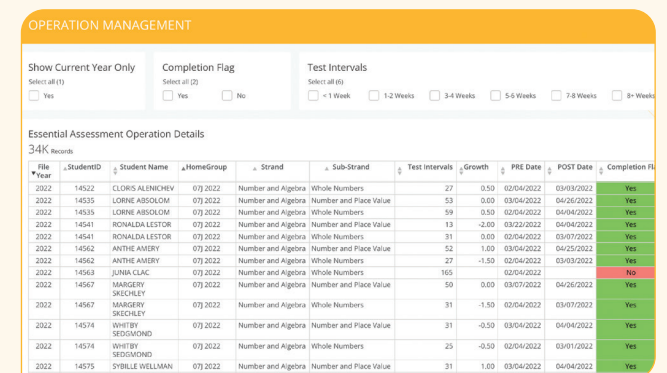
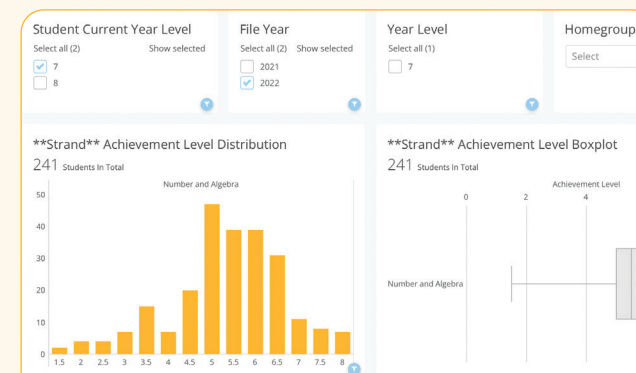
Merge all your external testing in one place with Student360. Access assessment platforms such as PAT, Essential Assessments, Renaissance and many other commonly used testing platforms.

Capture complete overviews of your student's results at class, cohort and individual student level. Student360 enables teachers to drill down to specific classes or a combination allowing efficiency for effective planning and differentiation for your student's needs. Use the filter to flag any student regression and those students that are included in the NCCD.



## PAT Analysis

Visualise PAT data quickly with the ease and effectiveness of traffic light reporting. Easily interpret PAT results with quick access to scale scores, percentiles and ranking scores against the curriculum. Comparative data provides essential insights into how your school is performing. Compare student results with inputs such as comparisons between year levels and the national average.



## Essential Assessment

Further support teacher planning with better data visualisations to help identify student needs and differentiation. With the help of top view distributions of cohorts to individual student results are easily interpreted empowering teachers to make informed decisions. Drill down even further for strand and sub strand levels.

Easily track incomplete pre and post-tests with the completion flag and test interval filters to quickly identify time between testing.

Data can be easily updated via an email connector from your current data source and enables your school full autonomy to managing the data flow when new testing commences or spontaneous testing for individual students occur throughout the year.

## Optimise your recruitment process to easily hire and manage new talent.

When it comes to recruitment, efficiency is key. From looking at the needs of the company to the onboarding of new talent, a hiring dashboard allows HR professionals to have a bird's-eye-view of the entire process.

The changing events of the past few years have left many HR professionals feeling overwhelmed and burned out. Many are searching for ways to simplify and optimise the process of hiring and managing new talent.

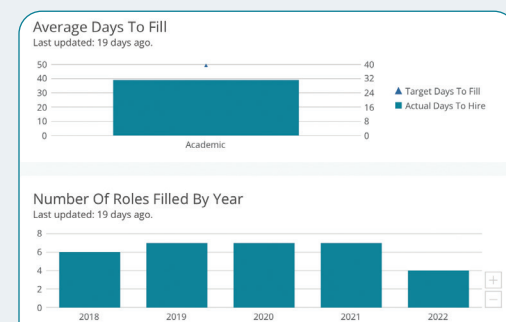
It's hard to keep track of all the data involved in acquiring new talent. Rather than trying to keep tabs on information, a hiring dashboard centralises data, allowing you to make better, more informed hiring decisions.

Recruitment360 helps HR managers visualise candidates currently in the recruiting pipeline as well as vacancies within the company that must be filled. By compiling all the information relating to an organisation's recruitment in one place, HR recruitment dashboards streamline the recruiting and hiring process and help HR managers to achieve their goals.

Recruiters need to know more than the baseline when it comes to their workforce:

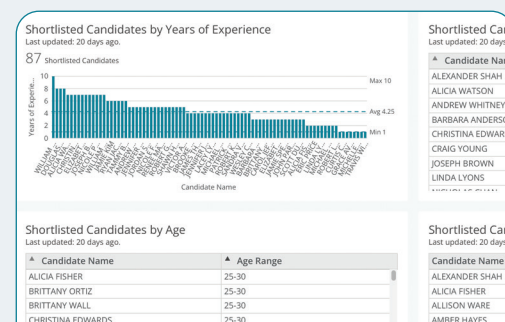


## Recruitment360 Features



### View time to hire

Receive insights ahead of time into the time it takes your school to make new hires or send out contracts.



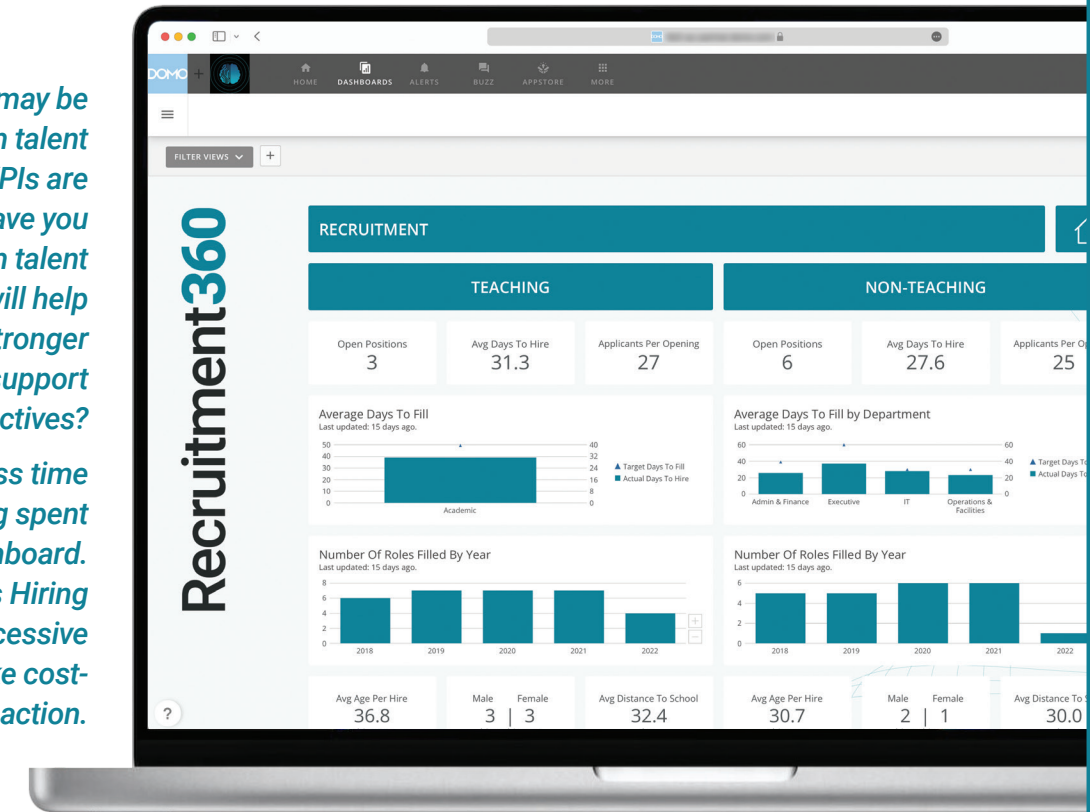
### Determine quality of hire

Calculate and analyse the quality of your new hires to determine the effectiveness of recruitment screening methods.



*As a recruiter, you may be wondering which talent acquisition KPIs are most impactful. Have you considered which talent acquisition metrics will help you become a stronger recruiter and support business objectives?*

*See where excess time and money are being spent with a Hiring Dashboard. Recruitment360 allows Hiring Managers to detect excessive spending and take cost-effective, strategic action.*



*A birds-eye-view of your entire recruitment process. From open positions to time-to-hire.*

**Shortlisted Candidates by Age**  
Last updated: 20 days ago.

Candidate Name	Age Range
ALEXANDER SHAH	25-30
ALICIA FISHER	25-30
BRITTANY ORTIZ	25-30
BRITTANY WALL	25-30
CHRISTINA EDWARDS	25-30
CHRISTOPHER KELLY	25-30
DAVID ROBBINS	25-30
DOMINIC SANTOS	25-30
DOUGLAS WILLIAMS	25-30
JAMIE KIM	25-30

### Source channel efficiency

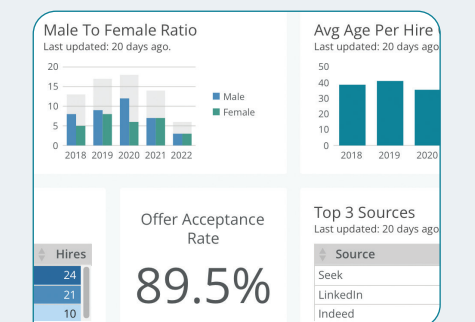
Optimise your sourcing channels by seeing where your best hires are coming from. Focus your efforts on where you best candidates enter the pipeline.

**Open Roles Summary**  
Last updated: 20 days ago.

Role Name	Salary Band	Department
Academic Director	\$97-100k	Executive
Administration Assistance	\$26-28/h	Admin & Finance
Assessment and Curriculum Programs Coordinator	\$90-95k	Executive
English Teacher for Junior Years	\$80-85k	Academic
IT Support Officer	\$65-70k	IT
Music Teacher	\$36-40/h	Academic
School Librarian	\$25-30/h	Operations & Facilities
Student Assistance Counselor	\$65-68k	Admin & Finance
Teacher Aide	\$30-35/h	Academic

### Open role summary

See all of the open roles that your school has in one place, as well as where each role is up to in the hiring process.



### Determine adverse impact

Determine whether your recruitment screening processes are inclusive of all classes and take action to avoid adverse impact.



## Power-up your HR program to attract, train and retain.

HR reporting is crucial. HR reports provide both quantitative and qualitative information on employees, HR practices and company trends. This information is vital for decision making as it's almost impossible to make informed business decisions when HR stakeholders lack insight into their own organisation.

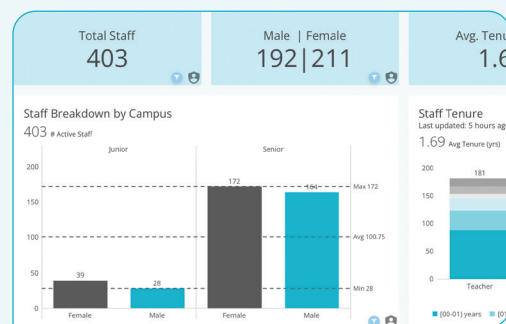
HR reporting produces the key metrics required to gain insights into the state of the organisation and uncover where improvements need to be made. For example, the curriculum department may be struggling with high turnover or time-to-hire rates, indicating that more emphasis should be placed on retaining employees. If these figures aren't tracked, then such a problem may only reveal itself after it's too late; when the department is so under-trained and understaffed that student results plummet.

With HR reporting, new trends and opportunities can be spotted early on and emerging problems can be addressed before they significantly impact the business. As well as identifying employee turnover patterns, HR reporting helps organisations make better hiring decisions, forecast hiring requirements, track employee performance, discover the causes to key issues, and track issues pertaining to costs of absence, labour, training and recruitment.

## Gain important insights into the lifeblood of your school:

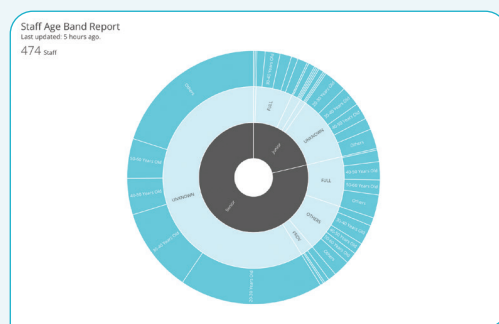


## Staff360 Features



### View staff demographics

Get to know the finer details of your staff workforce. All your data on age, gender, tenure, even staff residential area placed on one page for easy and effective analysis.



### Age band reporting

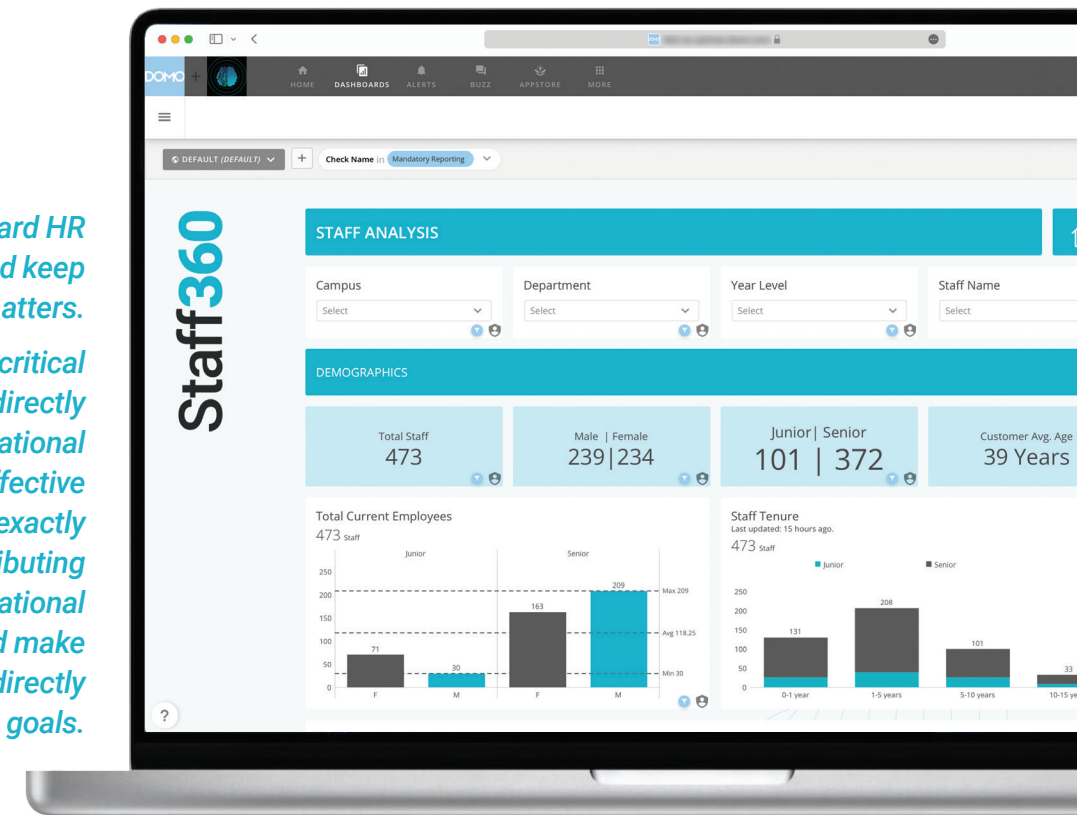
Know your staff headcount by age to better understand your workforce composition. Help connect the dots between trends and your staff with workforce age band reporting.



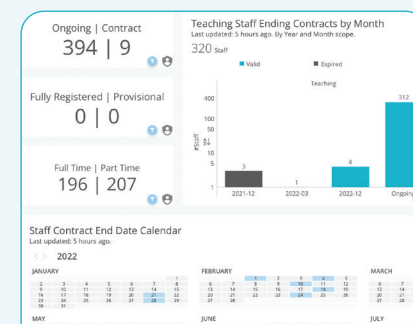
Connect with thousands of data sources, including:

Go beyond the standard HR reporting metrics and keep track of what really matters.

Receive business-critical insights that link directly to your organisational strategy through effective HR reporting. Know exactly how your HR is contributing to organisational performance and make decisions that directly relate to business goals.

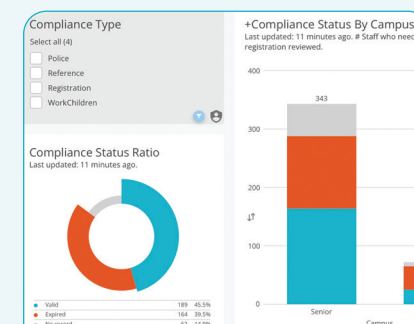


Attract, train and retain through effective management of staff from recruitment to retirement.



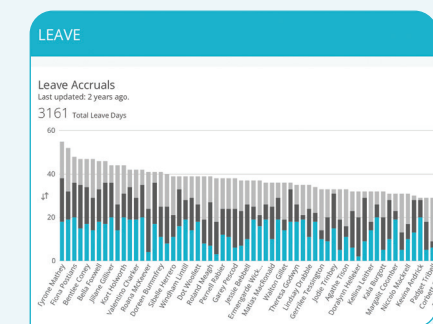
### Manage contracts

Manage your staff contracts using a simple dashboard. Keep track of your full time versus part time contracts and know when staff contracts are due to end or be renewed.



### Mandatory checks

From Police to Working With Children checks, view all valid, expired and overdue checks for your staff. Take quick action in the renewal or acquisition of mandatory checks inside Staff360.



### Leave management

Access to all leave numbers across your workforce. A snapshot into how much accrued leave staff members have, and the total leave days across your workforce.

## Manage staffing and duties with Planner360.

Workforce management has a variety of problems within any school. Absenteeism, over or under-staffing, correctly tracking time and ensuring compliance with labour regulations are all issues that stem from the inability to collect, visualise and analyse employee data.

Many schools manage schedules with software that fails to consider employee time off requests or individual working requirements, forcing employees to trade shifts “off the books”. Sometimes shifts won’t get filled at all, and if they do, making sure the person working is paid correctly can be challenging, a swap of shifts may make someone eligible for overtime without the manager being aware.

If the school is using software to track this, often the software isn’t integrated with complementary systems, or data can’t be accessed without asking for help from someone in HR. These issues prevent leaders from spotting and resolving potential inefficiencies in workforce management.

By measuring these KPIs, a school can reduce labour costs and the costs of compliance or noncompliance. Managers have better visibility into data and trends, and employees have the technology and best possible environment in which to do their jobs.

### What are some key questions to ask when analysing your workforce?

What are the competencies, attributes and composition of the current workforce?

What is the current workload?

What is the current year labour budget?

What current skills are essential to the business?

What are the key characteristics, skills and/or profile of employees on contracts and casuals?

## Planner360 Features

Availability List

Last updated: 12 days ago.

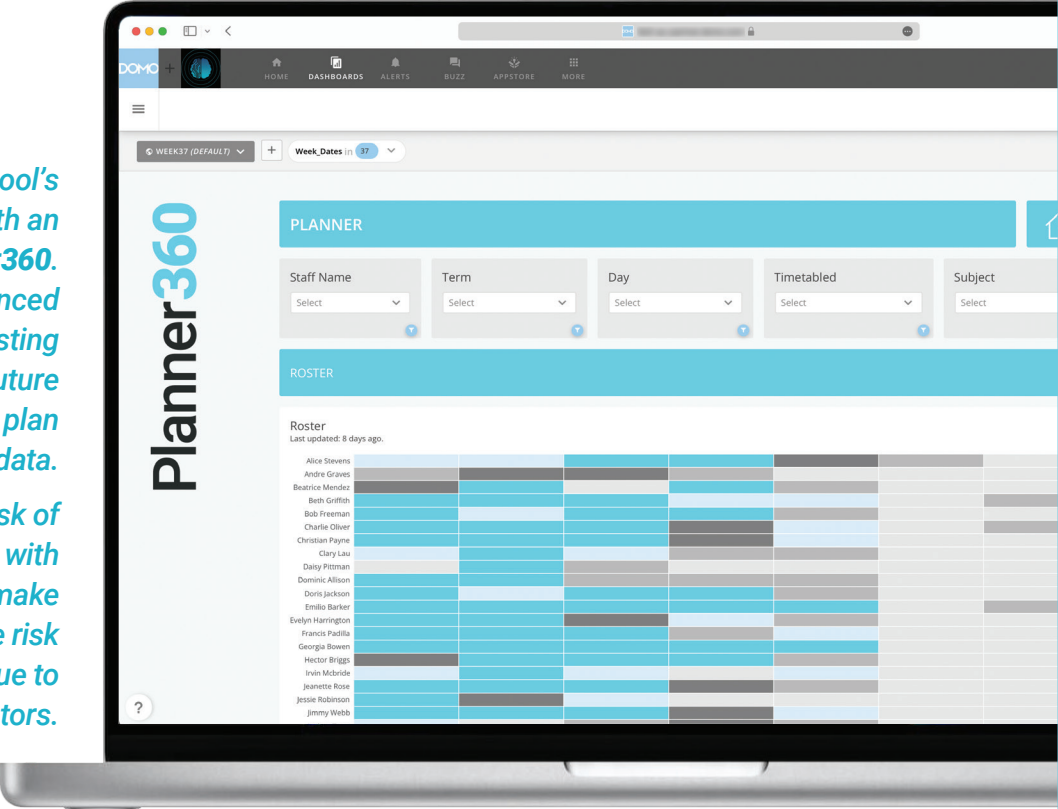
Available Staff Name	Day	Timetabled	Year Level	Subject
Melvin Owen	Monday	Period 3	Yr 7	Dance
Meghan Manning	Thursday	Period 1	Yr 7	Digital Photography
Armando Gregory	Monday	Period 3	Yr 7	Physics
Armando Gregory	Monday	Period 5	Yr 7	General Science
Armando Gregory	Wednesday	Period 6	Yr 7	Food Technology
Armando Gregory	Wednesday	Period 3	Yr 7	Biology
Armando Gregory	Friday	Period 2	Yr 7	General Science
Jill Knight	Friday	Period 5	Yr 7	Physics
Jill Knight	Friday	Period 1	Yr 7	Information Technology
Teri Sherman	Wednesday	Period 6	Yr 7	English
Teri Sherman	Thursday	Period 6	Yr 7	History

Campus Map

Last updated: 12 days ago.

Connect with thousands of data sources, including:

Increase your school's resilience with an investment into Planner360.  
 Leverage advanced analytics and forecasting tools to predict future staffing needs and plan using historical data.  
 Anticipate the risk of multiple possibilities with scenario planning and make changes to reduce the risk of under-staffing due to unprecedented factors.



Timetabling reimaged. A 360-degree view of all staff availabilities, duties, and capabilities.

### Strategically manage substitute programs.

Whether for professional development, illness or personal reasons, teachers need to be out of the classroom from time to time. Each absence can chip away at student learning, and quality, qualified substitutes must be found to cover the class.

Teacher absences are inevitable; it's just not realistic to require perfect attendance every year of their career. That means school leaders are faced with the difficult task of finding the right balance that acknowledges teachers as professionals, while keeping student learning at the forefront.

Mitigate the impact of staff absenteeism on students by having a qualified substitute in the classroom. The negative effects of teacher absenteeism are exacerbated when your school has a shortage of qualified substitute teachers, making it important to develop a healthy substitute pool with plenty of active substitutes with diverse skill sets.

Part of having a strong substitute teacher program is keeping substitutes engaged and properly trained. Offering professional development for substitutes beyond a brief orientation can help them manage their classrooms and teach students more effectively.



## IT analytics for schools: Make sense of all your ICT data.

Your school's data and technology is the lifeblood of your institution's digital wellbeing. Maintaining the health, efficiency and security of this network is a multi-dimensional issue. Effective management requires fast and reliable access to IT data from across your school to give you a near real-time insight into the key metrics you need to know to ensure your ICT department is delivering to its commitments and goals.

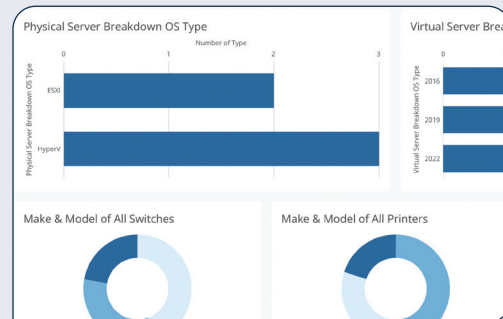
Effective utilisation of help desk data is vital for any ICT manager. Gaining insights into the workings of your help desk, core infrastructure, end user devices as well as your school's security posture will help you make informed decisions and better align your help desk with your organisation's business goals. This can often be a daunting task given the amount of data and size of your IT environment.

That's where ICT360 can help. Our IT analytics tool reduces your workload and helps you make sense of your data. It is often difficult to determine which KPI's need to be looked at. ICT360 gives the ability to set custom alerts and be notified when KPI's are falling, growing or need attention. ICT360 gives users the ability to set their own conditions, and alerts only go out to those who need them.

### Enterprises that use analytics for IT witnessed:

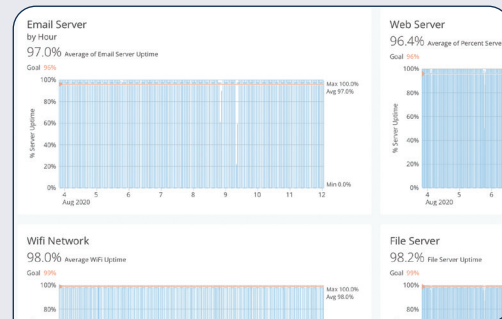


## ICT360 Features



### Optimise IT infrastructure usage

Track hybrid cloud, multi-cloud and on-premises infrastructure usage; eliminate unused backups, rightsize IT infrastructure and reduce costs.



### Monitor application performance

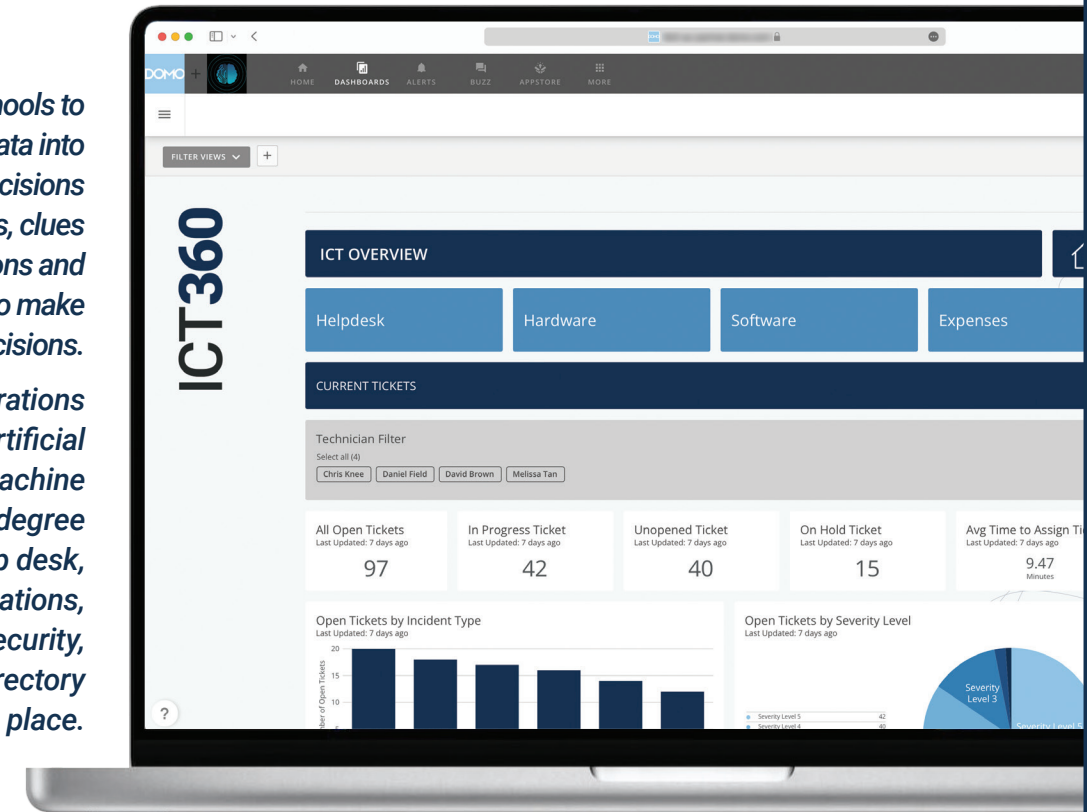
Visualise system health, maximise availability, reduce outages and MTTR, and analyse incidents and events to identify root causes faster.



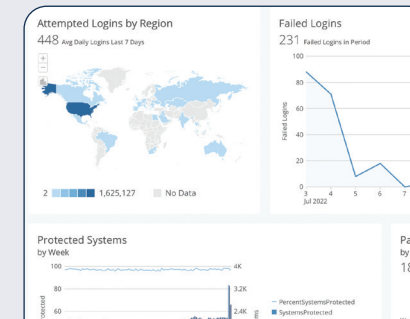
Connect with thousands of data sources, including:

*ICT360 allows schools to transform their raw data into effective business decisions through narrative insights, clues to improve IT operations and empowers IT leaders to make informed decisions.*

*Unify your IT operations with the power of Artificial Intelligence and Machine Learning and get a 360-degree view of your help desk, networks, applications, infrastructure, security, projects and Active Directory all in one place.*



Leverage AI to unify IT and get a 360-degree view of your IT department in a single console.



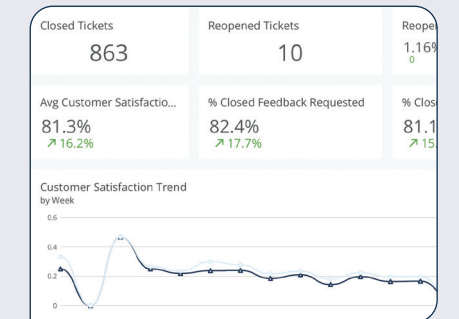
### Ensure resilience against threats

Prioritise unprotected devices by prevalent risks and exposure, and close gaps in your cybersecurity mesh.



### Automate service operations

Track tickets from start to finish, troubleshoot bottlenecks, automate service processes to reduce overhead, and deliver faster resolutions.



### Improve project outcomes

Optimise performance, increase output, and orchestrate new projects with minimal or no disruption to existing operations.

## All of your campus and operations data tracking needs.

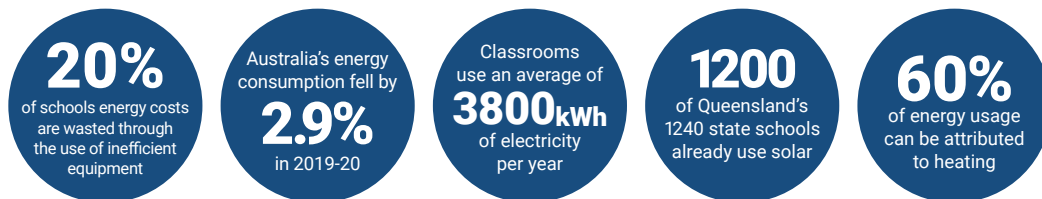
Facilities management metrics are data points that reflect the overall performance of your assets in your organisation. Identifying the right metrics to measure will help keep you from being overwhelmed and slowed down by unimportant data.

Schools collate a mountain of data relating to campus operations, so using this data to show value or information on campus operations is no easy feat. Many will be left wondering, where do I even begin?

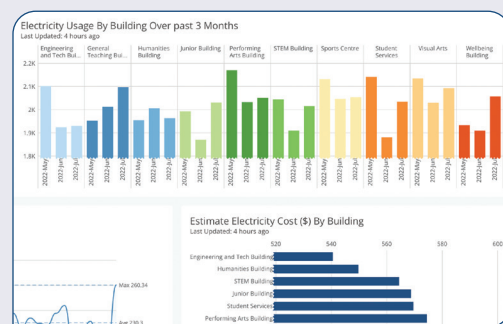
Facility management metrics take concepts like efficiency and attach value to them. A good metric puts decision-makers on the same page when it comes to understanding how their facilities function. Most importantly, they quantify a wide range of insights within a workplace, including organisation, productivity and reliability.

Recognising the need to be proactive, more schools are taking the time to review maintenance needs regularly, rather than waiting until an outage to occur. To measure success in this area, look at the total cost of repairing equipment, the cost of service and the labour hours compared to parts and strive for improvement in each of these areas. Ops360 helps make this information readily available.

## Get on top of your school's operating costs, know the facts & trends:

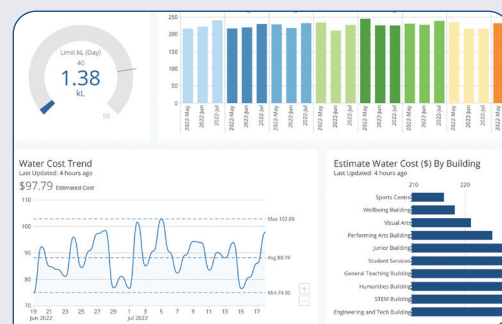


## Ops360 Features



### Monitor your energy usage

Understanding how and when your equipment uses energy will give you a baseline to track and report improvements. By making sure your school is energy efficient, you're doing your part in becoming more sustainable for the future.



### Monitor your water usage

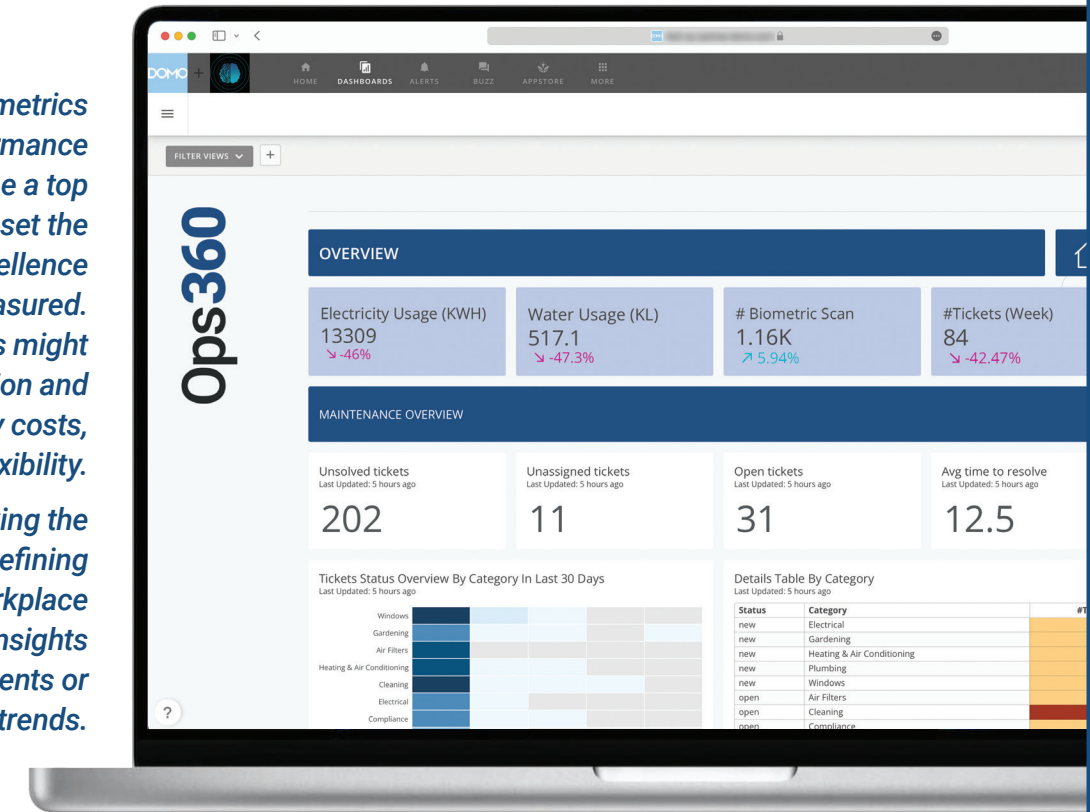
Monitoring your water use helps you understand your usage patterns, identify leaks and improve inefficiencies. Develop an understanding of your regular usage and what you should expect from future water usage.



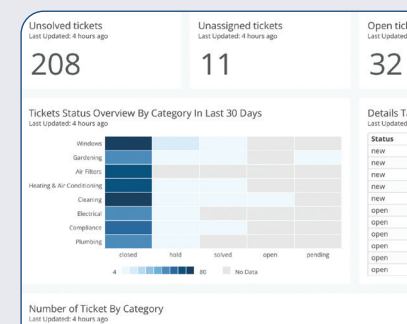
Connect with thousands of data sources, including:

Facilities management metrics are a type of Key Performance Indicator that define a top level of success and set the benchmark for excellence in whatever is measured. Some KPI metrics might include space utilisation and efficiency, total utility costs, and operational flexibility.

Once you're tracking the right metrics and defining the important workplace variables, you'll have insights to make improvements or monitor trends.



Your very own Chief Operations Officer, there to explore and develop operational efficiencies.



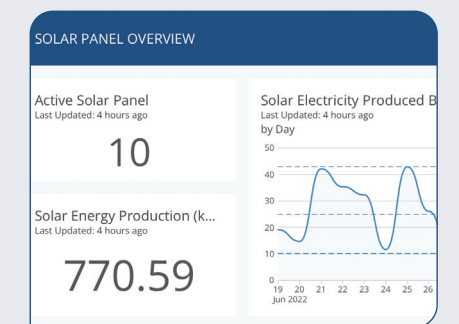
### Maintenance overview

Equipment in your school will eventually wear out or break. All staff at a school should be aware of the number of open maintenance tickets as well as where these tickets are located within your campus.



### Building utilisation

Distribute, manage and track resources within a school, allowing management to analyse the existing use of the space and apply transition planning management towards any applicable changes.



### Solar panel efficiency

Gain insights into how much electricity your solar panels are producing, how much you are using from the grid, the temperature of your panels, and even measure the impact of shade on their output.



## The ideal platform for your Business Manager.

When it comes to reporting, does it feel like you've been hired to herd cats rather than analyse facts? If your workflow is all work with no flow, you will spend all your time dissecting and preparing the figures and less time on analysis and projecting what the next three or six months will look like. School leaders will start asking questions that you haven't had the time to know the answers to.

Save valuable time with Finance360 and see all your data sources on a single page. Finance360 automates manual processes for board or monthly reporting, flash and KPI reporting, income statements, statement of cash flows and balance sheets, budget and forecasts, reports for different departments, tailored finance slide decks, all in a single system. The time you used to spend putting a report together can now be spent adding value to strategic decisions for your school.

Do you have a report that you need to prepare every month in Excel because your finance system doesn't quite have the report you want? We can design a dashboard in Finance360 that is customised to your needs. If the data exists across multiple school systems, we can combine all those data sets into the one table, chart or dashboard, ready to be analysed or for you to present directly at your next meeting.

## Schools that use analytics for finance witnessed:

**42%**  
more time for  
data insights

**50%**  
quicker availability  
of monthly executive  
reporting

**67%**  
of school leaders  
feel able to make  
better informed  
decisions

**29%**  
increase by department  
heads spending within  
5% of their budget

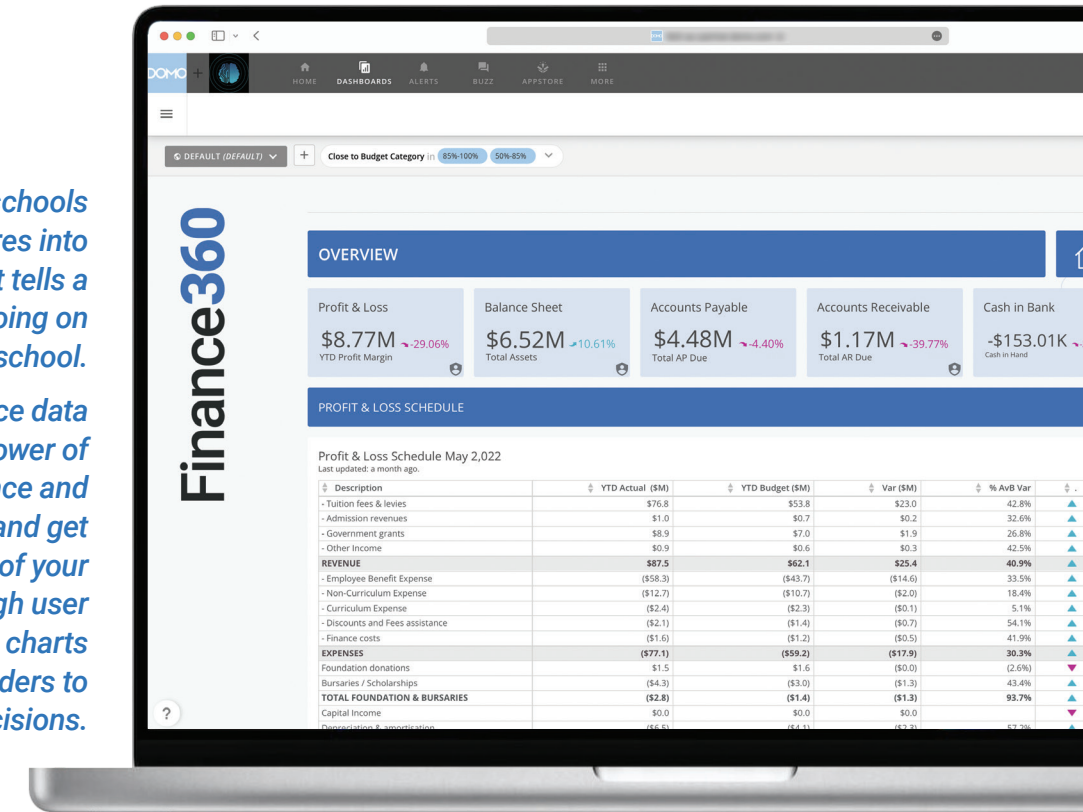
**up to  
20%**  
savings for each  
new dollar spent  
on analytics



Connect with thousands of data sources, including:

Finance360 allows schools to transform their figures into insightful reporting, that tells a story of what is really going on inside your school.

Unify all your finance data sources with the power of Artificial Intelligence and Machine Learning and get a 360-degree view of your transactions through user friendly tables, dials and charts that empower school leaders to make informed decisions.



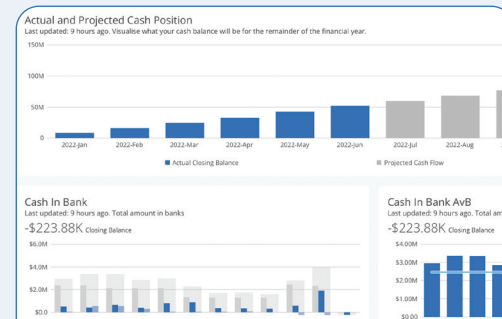
## Finance360 Features

Profit & Loss Schedule May 2,022  
Last updated: a month ago.

Description	YTD Actual (\$M)	YTD Budget (\$M)
- Tuition fees & levies	\$76.8	\$53.8
- Admission revenues	\$1.0	\$0.7
- Government grants	\$8.9	\$7.0
- Other Income	\$0.9	\$0.6
<b>REVENUE</b>	<b>\$87.5</b>	<b>\$62.1</b>
- Employee Benefit Expense	(\$58.3)	(\$43.7)
- Non-Curriculum Expense	(\$12.7)	(\$10.7)
- Curriculum Expense	(\$2.4)	(\$2.3)
- Discounts and Fees assistance	(\$2.1)	(\$1.4)
- Finance costs	(\$1.6)	(\$1.2)
<b>EXPENSES</b>	<b>(\$77.1)</b>	<b>(\$59.2)</b>
Foundation donations	\$1.5	\$1.6
Bursaries / Scholarships	(\$4.3)	(\$3.0)
<b>TOTAL FOUNDATION &amp; BURSARIES</b>	<b>(\$2.8)</b>	<b>(\$1.4)</b>
Capital Income	\$0.0	\$0.0
Depreciation & amortisation	(\$6.5)	(\$4.1)
Asset Impairments / restructure costs	\$0.0	\$0.0
<b>PROFIT / (LOSS)</b>	<b>\$10.4</b>	<b>(\$2.8)</b>
Finance costs	\$1.6	\$1.2

### Profit and loss at your fingertips

It's never been so easy to have a Profit and Loss at your fingertips that has accounts grouped into the categories you want.



### Revenue projection based on student enrolments

Track the impact of changing student numbers has on school revenue in future years.

Centralised financial data to stay focused on key performance indicators and financial health of your school.

DEBTOR ANALYSIS

Select Min Due Amount: \$1.2M

Select Statement Group: Select

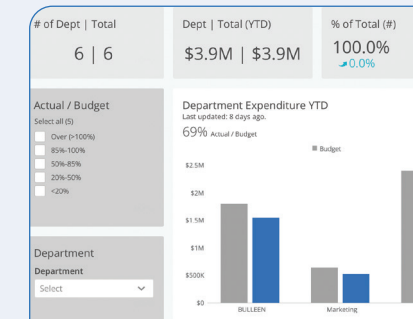
Select Debtor ID: Select

+ Aged Debtors  
Last updated: 4 hours ago.

ID	Debtor	Statement Group	Due Amt	Curre
TOTAL	Count 40		\$1,174,062.20	\$0
0089	LINDSAY ELLIOTT	Weekly	\$2,238.00	\$0
0155	JOSEPH ROMERO	Monthly	\$1,064.40	\$0
0156	JENNIFER SCOTT	Monthly	\$3,000.00	\$0
0210	KATHLEEN DAVIS	Centerlink	\$6,820.00	\$0
0247	RACHEL LIN	Fortnight	\$2,097.00	\$0
0292	JAMES PAUL	Annual	\$1,000.00	\$0

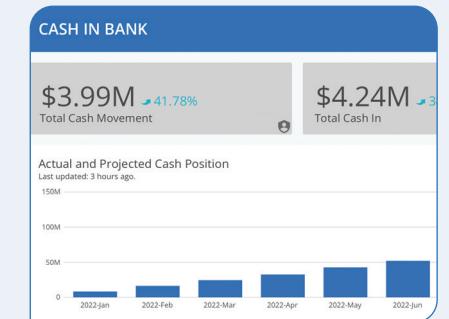
### Track the payments of your school fees

Optimise the recovery of school fees from families by understanding where the problem areas are.



### Budgets broken into departments

Easily track how each campus or school department are spending their budget. Have they spent too much or not enough?



### Cash balance forecasting

Visualise what your school's cash balance will be for the remainder of the financial year.

# Benchmark360

## Blend your data with industry benchmarks to track performance and results.

With Benchmark360, take your school's measurement and planning to the next level by blending your school's internal data with major sources of state and national benchmark data to give you valuable insight into your school's current performance.

Benchmark360 supports adaption and improvement in near real-time. As a result, you now have the ability to implement and measure standards across the administrative and academic aspects of your school to create the opportunity to set achievable, realistic targets based on demonstrated best-in-class performance.

Whether it is benchmarking students, staff or the school, the value of measuring performance against local, regional and national standards provides valuable insight for directing tactical and strategic planning as you continue along the path to educational excellence.

Industry benchmarks are a great guide but are ineffective on a day-to-day basis. The real power comes when benchmarks are combined with your school's previous and current data. Benchmark360 maintains focus on how your school is performing.

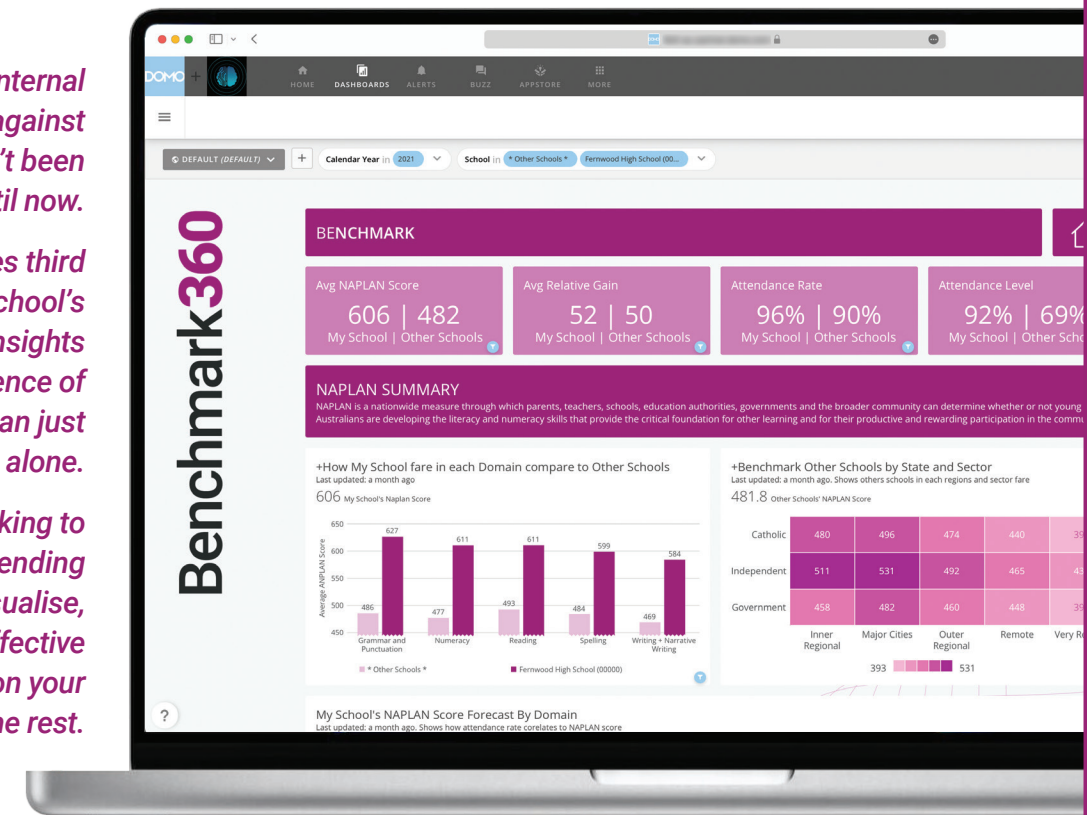
*Establishing meaningful and challenging goals or targets for student performance is central if data informed practice is to make a positive difference.*



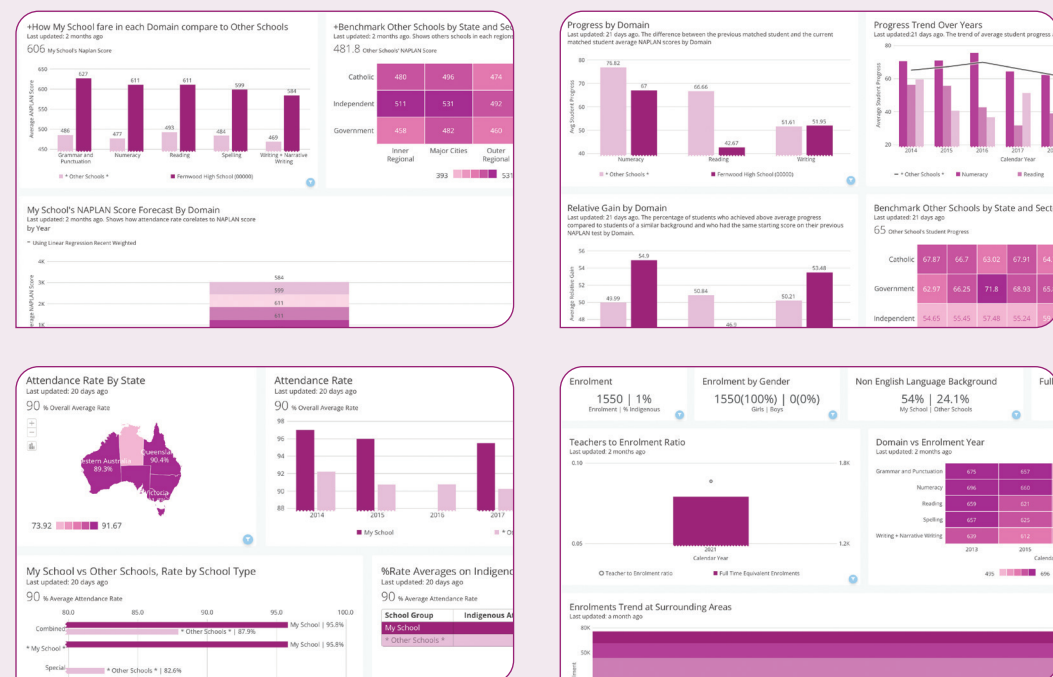
*The comparison of internal student reporting against industry standards hasn't been a priority, until now.*

*Benchmark360 merges third party data with your school's very own real time data insights to focus on the essence of improvement, rather than just on measurement alone.*

*Take your benchmarking to the next level by blending all available data. Visualise, analyse and take effective action to position your school ahead of the rest.*



## Benchmark360 Features



*Maintain focus on how your school is performing to set standards, using all past and present data.*

## Unparalleled access to the data that matters.

Education360 is delighted to partner with ACARA and has been granted access to NAPLAN school results, NAPLAN school progress, as well as student attendance data for all calendar years since NAPLAN was introduced in 2008. This data along with Census data from the Australian Bureau of Statistics form the basis of the data in Benchmark360.

External student assessments such as NAPLAN can be useful as a snapshot of learning at a point in time, but they are also limited because they do not cover every scholastic year or the full range of subjects taught in schools. Because of this, internal qualitative and quantitative data that is collected within schools is a useful addition to the information from external assessments.

Schools and educators need to gather multiple types of achievement and instructional data to inform decision-making about classroom practice. Care should be taken to ensure they collect the correct forms of data so as to accurately meet the identified need and/or intended purpose. For example, external high-stakes test results that have a time lag on reporting, such as NAPLAN, are able to indicate the effectiveness of past instructional practices, while student achievement data from classroom assessments can inform immediate instructional decisions. These uses are specifically matched to particular data types.

Close examination of such data in organised collegial meetings can enable educators to gain a more holistic understanding of individual students.



# Governance360

## Keep on top of how people in your organisation are utilising Education360.

Governance360 gives you the freedom to explore how your team is using Education360. As Governance360 is powered by live datasets with no configuration, your team can easily build cards, alerts and workflows around the metrics you want to see as well as use the pre-built dashboards.

Governance360 gives administrators a list of all their users so they can see who is in Education360 and their level of activity all in one place. Watch adoption levels and act quickly to help people get onboard by knowing login trends and seeing who still needs to log in. Keep your instance secure and make sure everyone is working at the best level.

Track application usage inside Governance360. It is often assumed that installed applications are required and being used constantly, when in reality they are rarely if at all used. These types of assumptions lead to over licensing of applications, and therefore a waste of money. With the correct insights into application usage, get the facts and see if installed applications are being used properly.

## Why track the usage of your new applications or platforms?

**83%**

of schools see data as an integral part of their business strategy

**84%**

of digital transformation initiatives in schools fail

**20%**

of database records contain data with quality issues

**65%**

of contact data from online web forms is invalid

**99%**

of new data is never used, analysed, or transformed

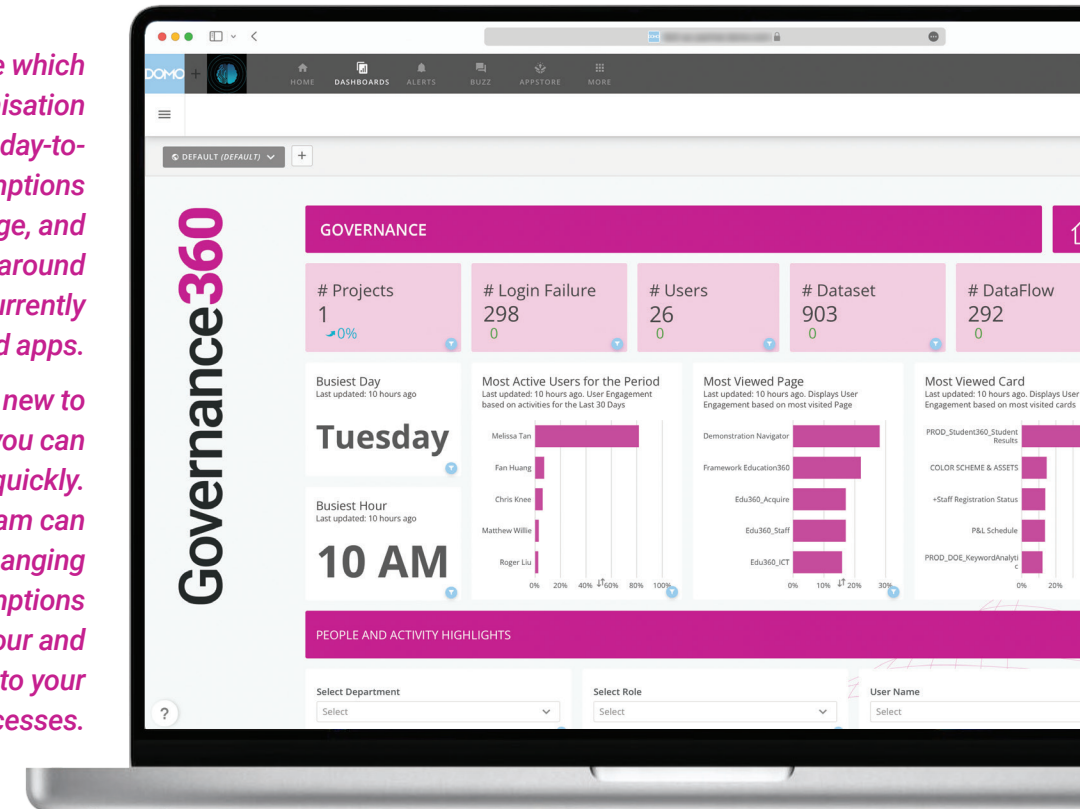
Connect with thousands of data sources, including:



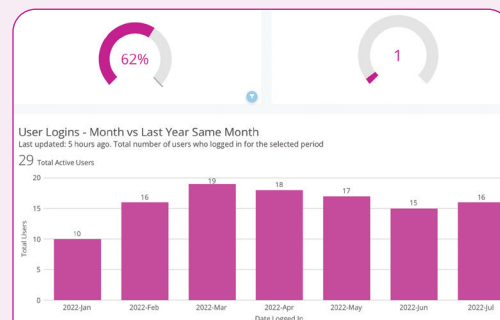
See in near real-time which applications your organisation depends on to perform it's day-to-day tasks, remove assumptions about application usage, and make informed decisions around further investment in currently owned apps.

Even if you're brand new to software usage analytics you can start seeing results quickly.

You and your team can gain valuable, game-changing insights that reduce assumptions about your users' behaviour and bring knowledge into your decision-making processes.

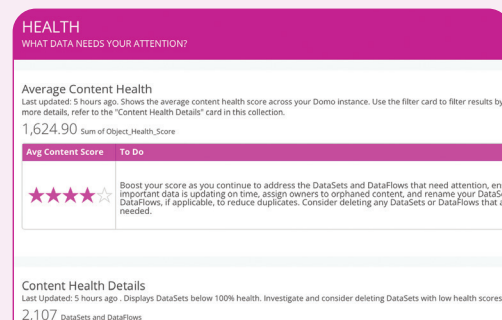


## Governance360 Features



### See your number of users

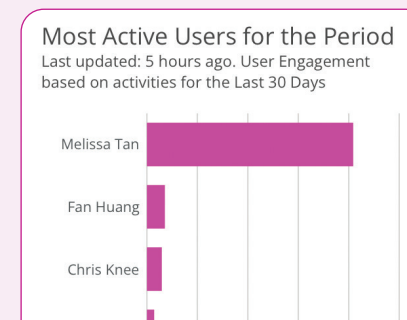
See the total amount of users in your organisation who are set up and using Education360. Use this number to determine who needs to be onboarded, or to track general acceptance rate.



### See the number of ingested data sets

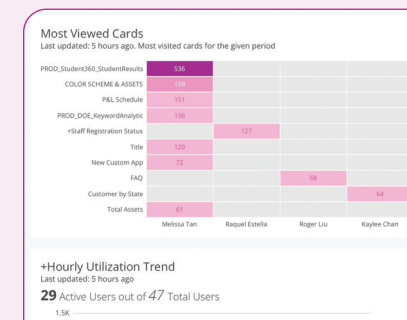
See how many different sets of data are being used within your Education360 instance. Know how many different places your insights and data are coming from.

See who is using Education360 and how they are using it.



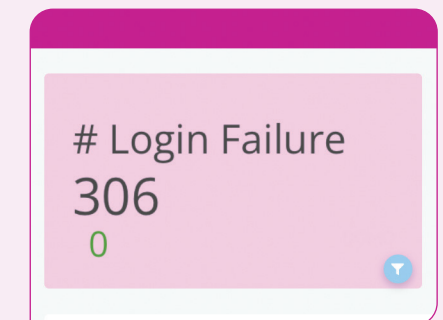
### See your most active users

Determine which department or faculty are the most active on Education360 to better cater for their needs, or to see who is utilising the platform the most.



### Most viewed pages and cards

Determine the value of pages or cards by seeing which are most viewed. Gain insights as to how your staff use the platform, and use this data to build future valuable cards.



### Number of login failures

Determine whether or not your staff are struggling to use Education360, and find a solution ahead of time by assessing the number of failed logins.

# Board360

## Bring your board papers to life by unifying your school's key performance indicators.

Board360 centralises the management and reporting of critical data from across your school. Board360 brings you the technology, specialist services and solutions required to centralise the control of the metrics that drive an improvement in your key measures of success.

Whether you are rolling out a long-term excellence program, driving incremental strategic change, or navigating state, national or global imposing forces, timely insight to critical information on the short, medium and long term impacts of this change is vital to your board's ability to have a coherent and consistent view of your key school metrics. Information flow to the executive team and board is often bottlenecked, limiting the timely access to this critical information and insight.

With Board360 you can cleanse, unify and aggregate your data from across your school, bring your board reporting to life with dynamic data visualisations and dashboards that illustrate your most critical metrics on a single page. Enable drill down and exploration of your data by board members to highlight issue root causes and facilitate remediation and planning discussions.

Board360 gives you the ability to get data into the hands of your Board members to drive more effective oversight and management with significantly less effort, more consistency and transparency.

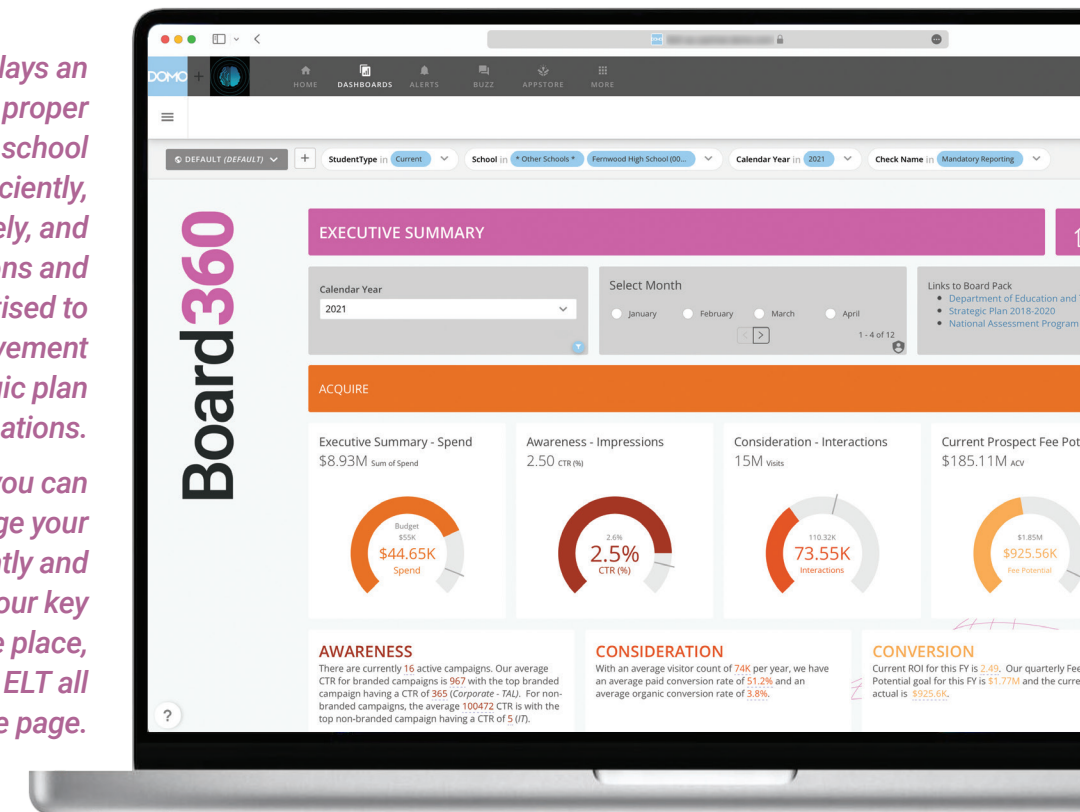
Using Board360, administrators, ELT and directors can securely access documents and information across your entire school and collaborate wherever and whenever, boosting productivity and improve collaboration within your organisation.



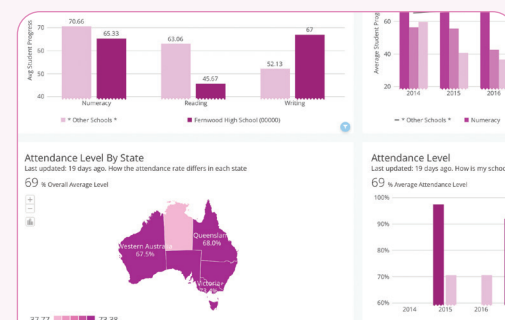
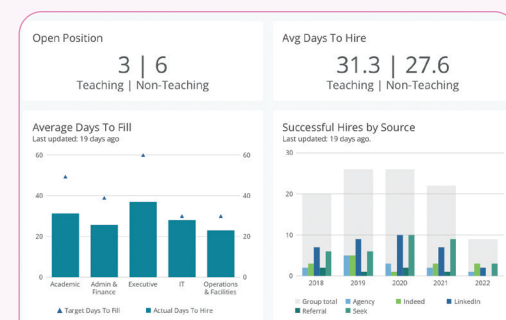
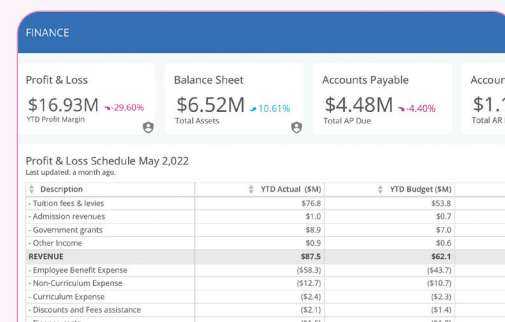
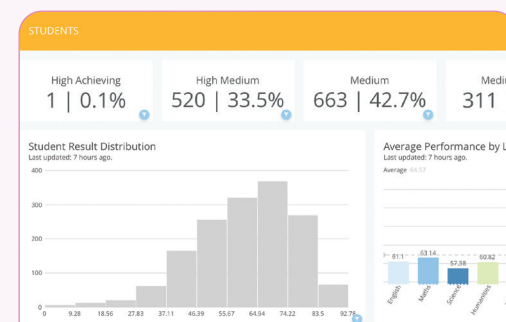
Connect with thousands of data sources, including:

*A school's board plays an important role in proper governance so that school resources are used efficiently, risk is managed effectively, and community expectations and student needs are prioritised to ensure ongoing achievement of the school's strategic plan and obligations.*

*With Board360 you can aggregate and leverage your school's data to efficiently and effectively bring all of your key metrics together in one place, so your Board and ELT all remain on the same page.*



## Board360 Features



Unify your school's key performance indicators by bringing all pillars together to drive effective oversight.

## Review your monthly pack anytime, anywhere

Access your dashboards from your computer, tablet, or device for real-time insights anytime, any place. Education360's visualisation tools ensure that your dashboard can be built once and display consistently no matter what device it's viewed on.

## Make annotations on your device of choice

In the Details view for a Visualisation Card, you can add annotations (explanatory notes) to data points in the graph to provide context for your viewers. Add private or shared annotations on any device.

## Provide context

Guide people through analysis with customised, interactive data stories that combine data, content and insights to support data storytelling with a connected narrative.

## Right person, right data

Ensure teams have access to the right data so they can self-serve, while governing access to data that should be secured.

## Access updated meeting packs instantly

Get the latest version of the board pack at all times as Board360 automatically updates all information in near real-time allowing you to make data driven decisions with the most up-to-date information available from across your entire school.



# Education360 Features



## Staff Wide Messaging Platform

With Education360's built in collaboration and messaging platform, you and your team can bring your conversations to your data so it is all kept in one place.



## No Code Drag & Drop Dashboard Builder

Education360's easy to use drag and drop visualisation and dashboard builder makes it easy for your staff to bring data together for personal use, or to share across your school.



## Data Science & Machine Learning

Integrate data science models and machine learning algorithms to leverage predictive and prescriptive analysis into your decision making processes.



## Internet-of-Things (IoT)

Stream, analyse and report massive volumes of data from your school's IoT devices. From temperature to traffic, CO2 to kWh and beyond. Make real-time decisions on real-time insights.



## Project Management & Tracking

Manage your school's internal projects with Projects & Tasks and centralise the running and reporting of your initiatives in one place.



## Role-Based Security & Permissions

Whether controlling access to entire dashboards or specific rows of data, Education360's platform wide security will ensure only the right people have access to the right data.



## Data-Source Writeback Integration

Cleanse, blend and send data back to your school's applications with Education360's Writeback capability and reduce error-prone double-handling of data for efficient operations.



## Data Lake / Data Warehouse

Have even more data sources? Education360 organically scales and expands to be your school's centralise data-warehouse as your school's data-maturity evolves. No need for new software or hardware.



## Notifications & Alerts System

Manage by exception and be alerted when something needs your attention. Education360's configurable alerts will automatically send you notifications when key metrics fall outside of your thresholds.



## Complete Data Transformation Toolset

From the simplest to the most complex data transformation needs, Education360's suite of data transformation tools gives you everything you need to cleanse, blend and transform data to meet your analytical needs.



## Appstore & Custom App Development

Looking for something more bespoke? The Education360 AppStore has hundreds of free and paid apps to install. With our complete developer toolkit, you can also build and deploy your own apps.



## Embed Cards & Dashboards Anywhere

Embed individual data visualisations, apps, or entire dashboards into your school's intranet or internet site as well as other internal applications to view your Education360 insights in your operational systems.



## Desktop & Mobile Enabled

Education360 is built mobile-first so that everything is ready to go on any device right out of the box. No need to build any custom applications.



## TV Broadcast Enabled Display

Want to keep everyone on the same page? Display your most important metrics on monitors in your staff room, office, or any other location in your school.



## Single Sign-on Integration

Integrate your school's current single sign-on solution and leverage your existing role and group profiles to simplify your security policies and group management.



## Certified Content & Governance

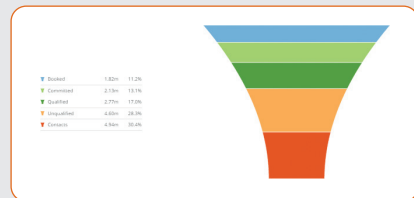
With Content Certification, you can have confidence that everyone is making decisions on data that has been validated and approved.

# Education360 Charts

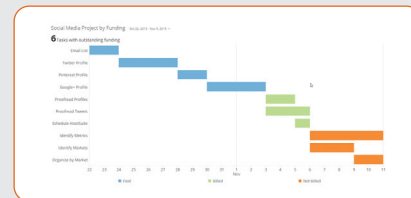
Visualise your data the way you want to.

With Education360 users get to choose how they view their data. The type of chart you select for a KPI card depends on the specific information you want to convey and what best suits you in order to fully understand the data that is being visualised. Make your data more understandable than ever with hundreds of different charts to pick from, all integrated into one system, with one data set.

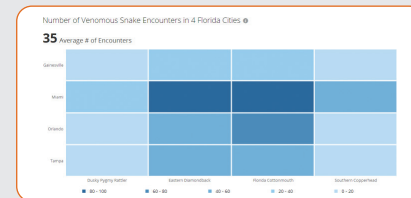
## Relationship



**Funnel Chart**  
Shows conversion

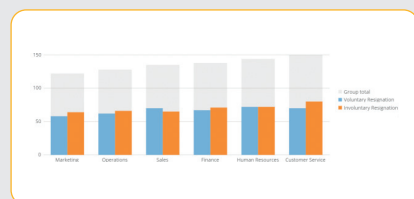


**Gantt Chart**  
For planning

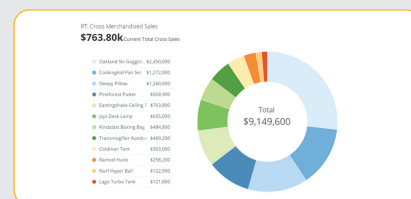


**Heat Map**  
Visualise hot spots

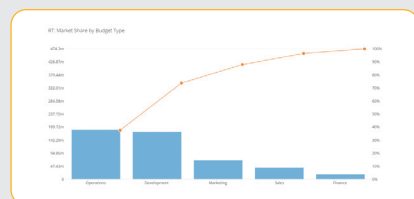
## Part to Whole



**100% Stacked Bar Chart**  
One timestamp + 100%



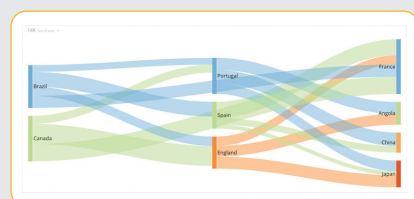
**Donut Chart**  
Shows arcs that show a percentage



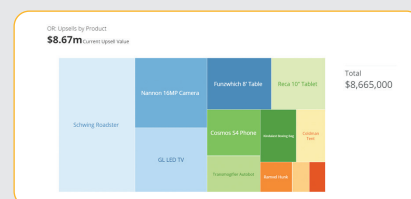
**Pareto Graph**  
80/20 analysis



**Pie Chart**  
Wedges showing Percentages

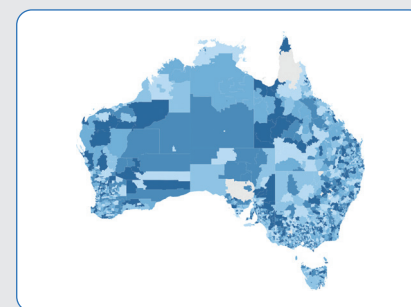


**Sankey Diagram**  
Shows flow



**Tree Map**  
Nested part to whole

## Geospacial



**Post Code map**  
Value by Post Code



**Custom Chart**  
Map out your organisation

## Exact Value

610.37  
↑ 15.8%

**Multi-Value Gauge**  
Numbers with trend values

Fundraising Results Jun 2, 2013 - Jul 7, 2013  
12k Current Value

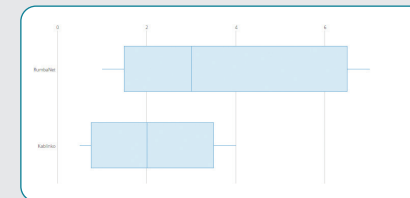
9.9k

**Single Value Gauge**  
Display singular values

Employee	Email	Extension
MacGregor, Sam	sam.margregor@yankuna.com	7324
Orton, Jason	jumpin.jason@yankuna.com	7381
Butler, Heidi	adelade0427@yankuna.com	7406
Pendlesmythe, Elen	miss.tuscon@yankuna.com	7355

**Standard Table**  
Multiple numbers

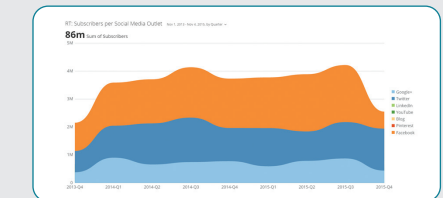
## Distribution



**Box Plot Chart**  
Distribution with median

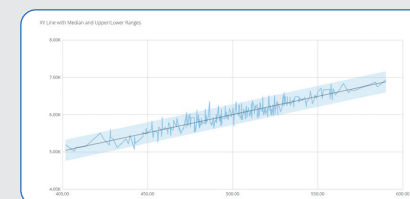


**Candlestick Chart**  
Shows high-low values

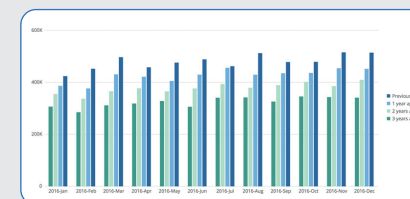


**Curved Area Graph**  
Shows overlapping distributions

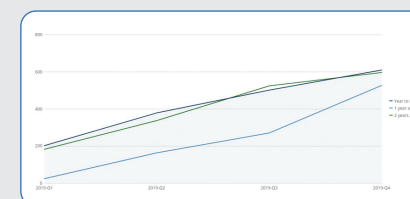
## Time



**XY Line Chart**  
Shows median/upper/lower ranges

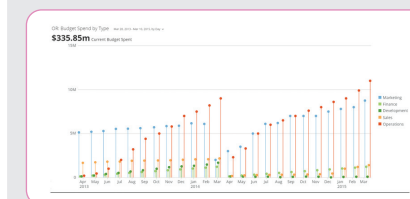


**Period-over Period Chart**  
Compare date range

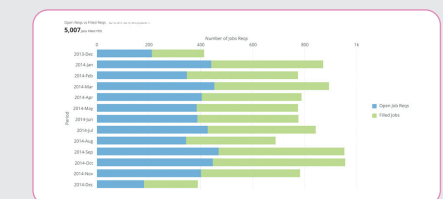


**Line Chart**  
Showing trends over time

## Categories



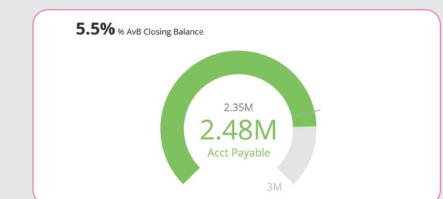
**Grouped Lollipop Chart**  
One timestamp + 100%



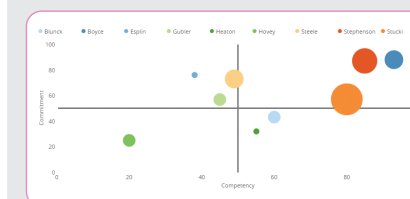
**Stacked Bar Chart**  
Between two variables



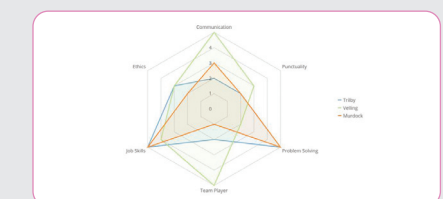
**Sunburst Chart**  
Great for showing demographics



**Gauge Chart**  
Indicate progress towards a target



**x/y Coordinate Plot**  
Measurements in combinations



**Radar Chart**  
Radial grid to display data



# Implementation

## Getting started with Education360

Join other schools in taking the first step to data transformation. As you now understand the benefits of the 12 pillars Education360 offers you, we invite you to join a partnership where we assist you to view your school as a business creating the same efficiencies and targeted approach to operating a high functioning and commercially strong organisation.

Education360 commences with a three-year commitment whereby our ask is for your assistance in outlining all of your available data sources to ensure a seamless transition to the datafication of your school. The more data sources we link to Education360, the more reports, analysis and insights your staff will have access to. Included in this program is 15 days of an Education360 Specialist Developer to work with your Data Captains in the implementation of this program.

## Why three years?

For you to benefit from data trends and insights, our experience shows that a minimum of three years provides that solid foundation for the centralised data solution to have maximum impact.

## We're by your side, step by step.

**Turn on the lights:** Schools are digitising, connecting and collecting their data, and have the data capability to easily store and access data through a shared platform.

**Optimise:** Leaders and their people now have the visibility that's needed to identify inefficiencies and opportunities, through studies, discussions and collaborations from clearly visualised data.

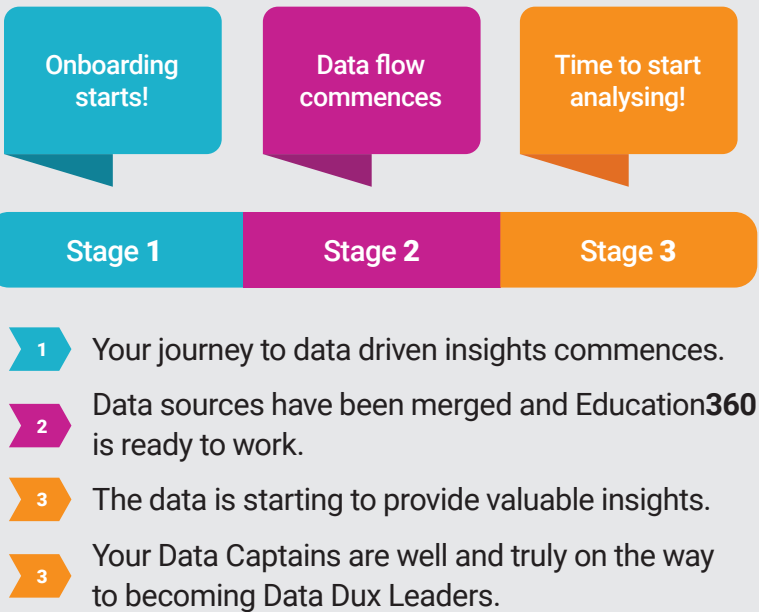
**Extend:** School capabilities can now be extended through technologies like AI or predictive analytics that analyse data to bolster decision-making or reveal new avenues of business.

**Transform:** Your school is now digitally adept, with powerful data-led methods to optimise the business, explore new opportunities.

## Timeline

Throughout the initial stages of implementation you will have our team of analysts and data insight specialists working with your Data Captain to shape your desired dashboard and reporting functions.

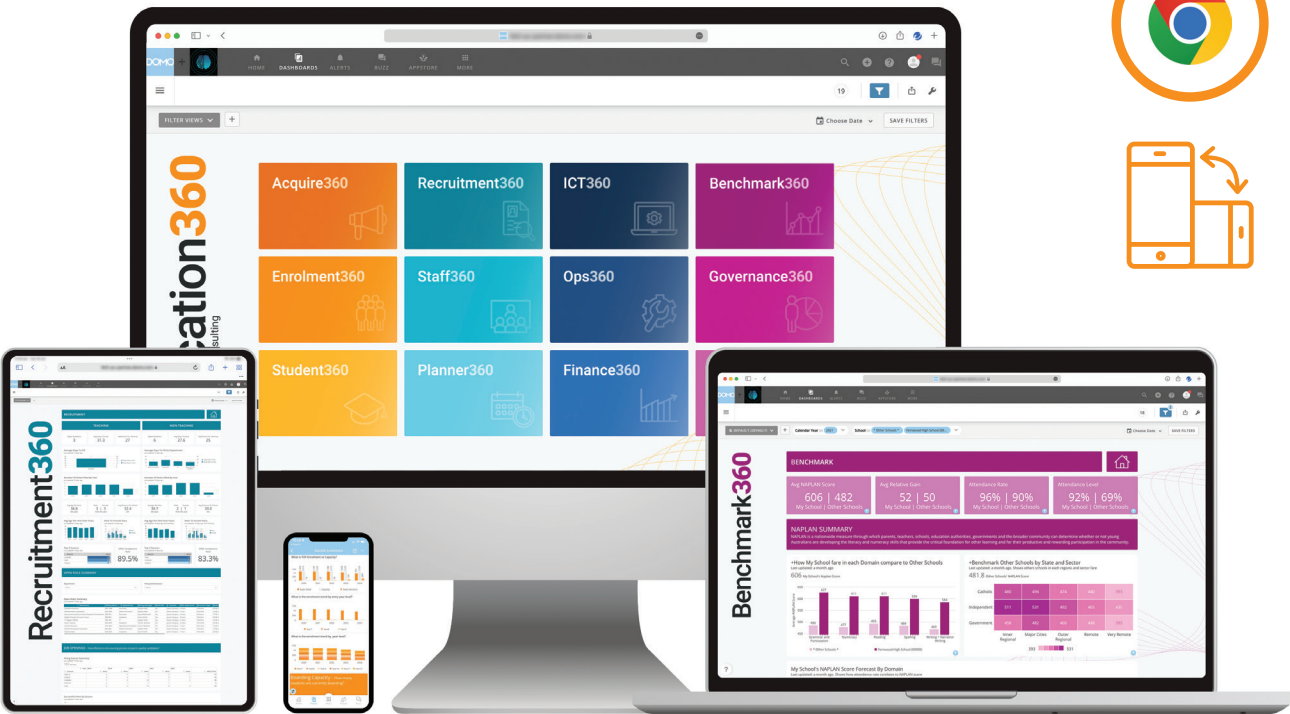
Key to the success of Education360 is your commitment to outlining the desired result ensuring for faster value realisation.



## Platform + Device Agnostic

## Whatever your school's operating system, Education360 works with you - not against you!

Whether you are an Apple, Google or Microsoft school, Education360 is platform and device agnostic. 100% cloud-based and accessible with a browser or app, Education360 will work as you expect, when you expect - across all devices.



## Data Source Agnostic

## Data and transformation for everyone

Import, cleanse and manipulate data from across your operations so you can measure the right metrics that power your school.

Education360's drag-and-drop Extract Transform and Load (ETL) solutions make it simple for anyone to pull data from multiple sources, process, transform, visualise, analyse and even send to other systems.



# The Data Dux Program

## The latest professional development in Education insights

As part of your Education360 subscription we will up-skill a **Data Captain** (member of your existing team) to analyse and make data-driven decisions. Allow us to deliver a perfect 21<sup>st</sup> century professional development initiative that will continue to add value to your organisation from implementation to the ongoing utilisation of the data management solution.

### Who is your Data Captain going to be?

They typically are...

- Excited by new ways of completing tasks
- Ready to take the next step in their career development
- Going to become your Education360 champion within your school

*Have you got  
someone in  
mind yet?*



### Year 1: Data Captain Training

YEAR 1

**Data Captains** will complete a series of monthly modules that relate directly to the engagement and success of Education360.

The modules focus on:

- Implementing/Onboarding school staff
- How to create reports and insights
- How to present reports for decision making

### Year 2: Data Dux Master Class

YEAR 2

By now you not only have the keys, but you are driving with precision and speed. We look at ways to build on your learnings from **Year 1** and turn you into a **Data Dux** with the end goal of transforming you into a self sufficient datafication master.

- Advance business insights
- Value analytics
- Data problem solving and solution recommendations
- Receive your very own Education360 certification

stock photography: freepik.com

*“There is a need for a cultural shift from using data for compliance to using data for improving student performance in each classroom.”*

*- Kathie Marshall*



# Education360

Powered by 9X5 Consulting



1800 950 667

[info@education360.com.au](mailto:info@education360.com.au)

[education360.com.au](http://education360.com.au)

